

Research

Individual heterogeneity and capture–recapture models: what, why and how?

Olivier Gimenez, Emmanuelle Cam and Jean-Michel Gaillard

O. Gimenez (<http://orcid.org/0000-0001-7001-5142>) (olivier.gimenez@cefe.cnrs.fr), CEFE UMR 5175, CNRS, Univ. de Montpellier, Univ. Paul-Valéry Montpellier, EPHE, 1919 Route de Mende, FR-34293 Montpellier Cedex 5, France. – *E. Cam*, Evolution et Diversité Biologique, UMR 5174, CNRS-ENSFEA-IRD, Univ. Toulouse, Toulouse, France. – *J.-M. Gaillard*, Laboratoire de Biométrie et Biologie Evolutive, UMR 5558, Univ. de Lyon, Villeurbanne, France.

Oikos

127: 664–686, 2018

doi: 10.1111/oik.04532

Subject Editor: Nigel G. Yoccoz

Editor-in-Chief: Dries Bonte

Accepted 7 September 2017

Variation between and within individuals in life history traits is ubiquitous in natural populations. When affecting fitness-related traits such as survival or reproduction, individual heterogeneity plays a key role in population dynamics and life history evolution. However, it is only recently that properly accounting for individual heterogeneity when studying population dynamics of free-ranging populations has been made possible through the development of appropriate statistical models. We aim here to review case studies of individual heterogeneity in the context of capture–recapture models for the estimation of population size and demographic parameters with imperfect detection. First, we define what individual heterogeneity means and clarify the terminology used in the literature. Second, we review the literature and illustrate why individual heterogeneity is used in capture–recapture studies by focusing on the detection of life-history tradeoffs, including senescence. Third, we explain how to model individual heterogeneity in capture–recapture models and provide the code to fit these models (<https://github.com/oliviergimenez/indhet_in_CRmodels>). The distinction is made between situations in which heterogeneity is actually measured and situations in which part of the heterogeneity remains unobserved. Regarding the latter, we outline recent developments of random-effect models and finite-mixture models. Finally, we discuss several avenues for future research.

Introduction

Individual variation is at the core of the evolution of traits by the means of natural selection and exists within any population of living organisms. Individual variation occurs in virtually all traits, including fitness components such as reproduction and survival (Clutton-Brock 1988, Newton 1989). However, the amount of individual variation in a given trait in a given population varies a lot both within and across species. Between-individual differences in phenotypic attributes such as age (Caughley 1966, Emlen 1970), sex (Short and Balaban 1994), body mass (Sauer and Slade 1987), or

personality (Dingemanse and Dochtermann 2013), in genotype (Coulson et al. 2011), in habitat use or habitat selection such as home range size or quality (Mcloughlin et al. 2007), or in prey selection (Estes et al. 2003) have all been reported to affect most life history traits. More recently, both current and early-life environmental conditions encountered by individuals throughout their lives have been shown to generate individual differences in life history traits (Douhard et al. 2014, Berger et al. 2015).

The potential role of individual heterogeneity in terms of population ecology has been pointed out more than 30 years ago (Lomnicki 1978, Johnson et al. 1986) and repeatedly reported since (Bolnick et al. 2011, Kendall et al. 2011). Thanks to the increasing availability of high quality data collected during long-term individual monitoring of vertebrate populations (Clutton-Brock and Sheldon 2010), assessing the magnitude of individual heterogeneity, identifying its origin and quantifying its consequences has become a specific objective in many population studies.

From these studies (reviewed in Table 1), we can envisage three broad patterns of individual heterogeneity when considering a set of life-history traits, e.g. demographic parameters, independently of any methodological approach used to model these demographic tactics.

We will retain Stearns (1976)'s definition of a tactic, "a set of co-adapted [demographic] traits designed, by natural selection, to solve particular ecological problems". In the simplest case, individual heterogeneity corresponds to the random variation observed independently in each of the traits. In that case, there is no covariation between demographic traits and no life history tactic can emerge. Life history tactics can appear in response to marked differences between individuals in terms of constraints (of genetic, developmental or environmental origin). The axis of demographic variation will thus involve a low-high continuum of performance opposing individuals weakly constrained that will perform extremely well in terms of both survival and reproduction, to individuals subjected to high constraints (sometimes called "runt", Koenig et al. 1995) that will perform extremely poorly. Individual heterogeneity in that case will lead the axis of demographic variation to correspond to a low-high continuum of individual fitness, and is often designated as a continuum of individual quality (Wilson and Nussey 2010). Alternatively, individual heterogeneity can be associated with a set of different life history tactics so that each tactic is characterized by the same mean individual fitness. For instance, some individuals will allocate a lot of energy to reproduction and pay a cost in terms of decreased survival, whereas others will allocate a lot to avoid mortality risks and pay a cost in terms of reduced reproduction, leading to the negative co-variation between survival and reproduction expected from the allocation principle (Cody 1966) to show up.

Owing to the multiplicity of factors that shape individual heterogeneity, it is impossible to account for the total amount of individual heterogeneity by measuring even a large set of traits. For a given trait, we can distinguish a measured

individual heterogeneity using for instance phenotypic attributes such as age, sex and size from an unmeasured individual heterogeneity that includes all the remaining variation for given age, sex and size (Plard et al. 2015). Until recently, this unmeasured individual heterogeneity was most often neglected. Assessing unmeasured individual heterogeneity is especially tricky when studying survival (or mortality) because this trait simply corresponds to a state shift for a given individual. Thus, an individual dying at five years of age will have survived over the first five years in a row and then will have died at five years, leaving the standard mixed model approach generally used for assessing individual heterogeneity in most traits (van de Pol and Verhulst 2006, van de Pol and Wright 2009) not directly applicable. However, CR models do provide a general and flexible framework for estimating and modeling both population size and demographic parameters (including survival, dispersal and recruitment) in the face of imperfect detection that is inherent to populations in the wild (Gimenez et al. 2008). These methods rely on the longitudinal monitoring of individuals that are marked (or identifiable) ideally at birth, and then encountered (i.e. recaptured or seen) on subsequent occasions. The first CR methods that dealt with individual heterogeneity were developed with the aim to get unbiased estimates of population size in presence of differential individual responses to trapping (Otis et al. 1978). The context has changed in recent years, and CR studies now often focus on the process of individual heterogeneity per se to assess the diversity of life history trajectories within populations, to test for the existence of different life history tactics within populations, or to assess the differential susceptibility of individuals to environmental insults.

Here we aim at providing a review of individual heterogeneity in the context of CR studies. We first define what we mean by individual heterogeneity by examining the landmark papers on the subject and clarifying the terminology with regards to more recent uses of the concept. Then we review the literature and illustrate why individual heterogeneity is used in CR studies by focusing on the detection of life-history tradeoffs, including senescence. In a third section, we explain how to model individual heterogeneity in CR models. The distinction is made between situations in which heterogeneity can be explicitly handled by using states (e.g. breeding or disease states) or individual (time-varying or not) covariates (e.g. age or phenotype) and situations in which part of the heterogeneity remains unobserved. Regarding the latter, we outline recent developments of random-effect models and finite-mixture models. Lastly, we discuss several avenues for future research.

What is individual heterogeneity?

History and definitions

In CR modeling, consideration of heterogeneity between individuals of a population in demographic parameters (e.g. survival or probability of successful reproduction) has a long

Table 1. Case studies¹ reporting an analysis of individual heterogeneity in demographic parameters (i.e. survival and reproductive traits) within a CR context. The table lists the reference, the studied species, the main outcome as explicitly stated in the paper, and how individual heterogeneity was assessed. Individual heterogeneity corresponded either to the total amount of heterogeneity ('a priori' cases) or to heterogeneity measured using some metrics ('a posteriori' cases). In these latter cases, the metrics used are provided.

Authors	Studied species	Main finding	Metric of individual heterogeneity
Guéry et al. 2017	common eider <i>Somateria mollissima</i>	survival of the two migrating arctic populations was impacted directly by changes in the NAO, whereas the subarctic resident population was affected by the NAO with time lags of 2–3 years. Moreover, we found evidence for intra-population heterogeneity in the survival response to the winter NAO in the Canadian eider population, where individuals migrate to distinct wintering areas	a priori: two classes of heterogeneity (finite mixture models)
Péron et al. 2016	birds (five species) and mammals (four species)	individual heterogeneity in survival was higher in species with short-generation time (< 3 years) than in species with long generation time (> 4 years)	a priori: two classes of heterogeneity (finite mixture models) and continuous distribution of heterogeneity
Kenamer et al. 2016	wood duck <i>Aix sponsa</i>	strong positive relationship between survival and the number of successful nests body mass was not a good proxy of quality	a posteriori: early incubation body mass
Fay et al. 2016a	wandering albatross <i>Diomedea exulans</i>	age at first reproduction is negatively related to both reproductive performance and adult survival	a priori: two classes of heterogeneity (finite mixture models)
Garnier et al. 2016	alpine ibex <i>Capra ibex</i>	adverse environmental conditions, such as disease outbreaks, may lead to survival costs of reproduction in long-lived species	a priori: two classes of heterogeneity (finite mixture models)
Hileman et al. 2015	milksnake <i>Lampropeltis tringulum</i>	estimate adult survival (0.72 ± 0.16) and abundance ($n=85 \pm 35.2$)	a posteriori: observed maximum detection frequency
Link and Hesed 2015	red-backed salamander <i>Plethodon cinereus</i>	female <i>P. cinereus</i> mature earlier and grow more quickly than males	a priori: continuous distribution of heterogeneity
Hartson et al. 2015	steelhead trout <i>Oncorhynchus mykiss</i>	negative relationship between density and specific growth rate over a wide range of densities, but reductions in survival only at the highest densities	a posteriori: body length
Hua et al. 2015	Cumberlandian combshell <i>Epioblasma brevidens</i>	the overall mean detection probability and survival rate of released individuals reached 97.8 to 98.4% and 99.7 to 99.9% (per month)	a priori: continuous distribution of heterogeneity
Chambert et al. 2015	Weddell seal <i>Leptonychotes weddellii</i>	the probability of being absent from colonies was higher 1) in years when the extent of local sea ice was larger, 2) for the youngest and oldest individuals, and 3) for females with less reproductive experience	a priori: continuous distribution of heterogeneity
Pirotta et al. 2015	bottlenose dolphin <i>Tursiops truncatus</i>	there were marked inter-individual differences in the predicted amount of time dolphins spent in the presence of boats, and individuals tended to be consistently over- or underexposed across summers	a priori: continuous distribution of heterogeneity
Stoelting et al. 2015	California spotted owl <i>Strix occidentalis occidentalis</i>	Breeding reduced the likelihood of reproducing in the subsequent year by 16% to 38%, but had no influence on subsequent survival	a priori: continuous distribution of heterogeneity
Souchay et al. 2014	greater snow goose <i>Chen caerulescens atlantica</i>	Cost of reproduction on breeding propensity in the next year, but once females decide to breed, nesting success is likely driven by individual quality	a posteriori: previous breeding status
Koons et al. 2014	wild boar <i>Sus scrofa</i> and lesser snow goose <i>Chen caerulescens caerulescens</i>	Senescence can be severe for natural causes of mortality in the wild, while being largely non-existent for anthropogenic causes	a posteriori: cause-specific mortality
Horswill et al. 2014	macaroni penguin <i>Eudyptes chrysolophus</i>	survival of macaroni penguins is driven by a combination of individual quality, top-down predation pressure and bottom-up environmental forces	a posteriori: body mass

Continued

Table 1. Continued

Authors	Studied species	Main finding	Metric of individual heterogeneity
Lindberg et al. 2013	Pacific black brant <i>Branta bernicla nigricans</i>	annual survival of individuals marked as goslings was heterogeneous among individuals and year specific [...]. Adult survival (0.85 ± 0.004) was homogeneous and higher than survival of both groups of juveniles. The annual recruitment probability was heterogeneous for brant >1-year-old	a priori: two classes of heterogeneity
Chambert et al. 2013	Weddell seal <i>Leptonychotes weddellii</i>	existence of a latent individual heterogeneity in the population, with robust individuals expected to produce twice as many pups as 'frail' individuals	a priori: continuous distribution of heterogeneity
Barbraud et al. 2013	wandering albatross <i>Diomedea exulans</i>	strong evidence for heterogeneity in survival with one group of individuals having a 5.2% lower annual survival probability than another group	a priori: two classes of heterogeneity
Blomberg et al. 2013	greater sage grouse <i>Centrocercus urophasianus</i>	evidence for heterogeneity among females with respect to reproductive success; compared with unsuccessful females, females that raised a brood successfully in year t were more than twice as likely to be successful in year t+1	a posteriori: previous breeding status
Morano et al. 2013	North American elk <i>Cervus elaphus</i>	no difference in survival probabilities between pregnant and nonpregnant individuals or as a function of recruiting an offspring [...and] negative effect of recruiting an offspring in the current year on becoming pregnant the following year	a posteriori: lactation status and body condition
Pradel et al. 2012	greater flamingo <i>Phoenicopterus roseus</i>	breeding probability varied within three levels of experience. [... and] with random effects, the advantage of experience was unequivocal only after age 9 while in young having > 1 experience was penalizing	a priori: continuous distribution of heterogeneity and a posteriori: Experience
Reichert et al. 2012	Florida snail kite <i>Rostrhamus sociabilis plumbeus</i>	Experience is an important factor determining whether or not individuals attempt to breed during harsh environmental conditions	a posteriori: experience
Robert et al. 2012	Monteiro's storm petrel <i>Oceanodroma monteiroi</i>	reproductive costs act on individuals of intermediate quality and are mediated by environmental harshness	a posteriori: successful versus unsuccessful breeders
Hernandez-Matias et al. 2011	Bonelli's eagle <i>Aquila fasciata</i>	4-year-old and older successful breeders were more likely to breed the following year than failed adult breeders (0.869 versus 0.582), suggesting that the cost of reproduction is small in comparison with the variation in quality among individuals or their territories	a posteriori: successful versus unsuccessful breeders
Briggs et al. 2011	Swainson's hawks <i>Buteo swainsoni</i>	adult survival was inversely correlated with average reproductive output, with individuals producing >2 offspring having decreased survival [... and] reproduction in any year was positively correlated with survival	a posteriori: average annual nest productivity
Lee 2011	northern elephant seals <i>Mirounga angustirostris</i>	primiparous breeders did not suffer more than experienced breeders during years of environmental stress. [... and] Lower variances in survival of multiparous breeders suggest that primiparous adults constitute a more heterogeneous portion of the population	a posteriori: inexperienced versus experienced breeders
Moyes et al. 2011	red deer <i>Cervus elaphus</i>	the probability of reproducing unsuccessfully after a successful year is relatively low and varies very little, but is highest in young individuals with low PARE. [...and] Reproduction costs increase with declining PARE	a posteriori: proportional age-specific reproductive effort (PARE)

Continued

Table 1. Continued

Authors	Studied species	Main finding	Metric of individual heterogeneity
Marzolin et al. 2011	dipper <i>Cinclus cinclus</i>	strong evidence for actuarial senescence with an onset of senescence estimated at about 2.3 years	a priori: continuous distribution of heterogeneity
Buoro et al. 2010	Atlantic salmon <i>Salmo salar</i>	cost of reproduction on survival for fish staying in freshwater and a survival advantage associated with the "decision" to migrate	a priori: continuous distribution of heterogeneity
Kovach et al. 2010	intertidal snail <i>Nucella lima</i>	survival estimates from the best-fit model were different between habitat types	a posteriori: microhabitat use, individual color and length
Reid et al. 2010	red-billed choughs <i>Pyrrhocorax pyrrhocorax</i>	the negative correlation between offspring survival and maternal lifespan was strongest when environmental conditions meant that offspring survival was low across the population	a posteriori: longevity
Maniscalco et al. 2010	steller sea lion <i>Eumetopias jubatus</i>	females which gave birth had a higher probability of surviving and giving birth in the following year compared to females that did not give birth	a posteriori: give birth versus do not give birth
Millon et al. 2010	tawny owl <i>Strix aluco</i>	females who postponed reproduction to breed for the first time at age 3 during an Increase phase, produced more recruits, even when accounting for birds that may have died before reproduction. No such effects were detected for males	a posteriori: age at first breeding
Lescroël et al. 2009	Adélie penguin <i>Pygoscelis adeliae</i>	adult survival ranged from 64–79%, with BQI accounting for 91% of variability in the entire study population, but only 17% in experienced breeders"	a posteriori: breeding quality (BQI)
Bonenfant et al. 2009	bighorn sheep <i>Ovis canadensis</i>	in all age classes, natural survival was either weakly related to (lambs, adult rams) or positively associated (yearling rams) with early horn growth	a posteriori: early horn growth
Sedinger et al. 2008	black brent geese <i>Branta bernicla nigricans</i>	individuals with a higher probability of breeding in one year also had a higher probability of breeding the next year	a posteriori: bred in the previous years versus did not
Pistorius et al. 2008	southern elephant seal <i>Mirounga leonina</i>	mean postbreeding (pelagic phase between breeding and molting, about 62 days) survival of primiparous females was 0.830 compared to 0.912 for more-experienced females	a posteriori: reproductive experience
Weladji et al. 2008	reindeer <i>Rangifer tarandus</i>	successful breeders had higher survival and subsequent reproductive success than experienced non-breeders and unsuccessful breeders, independently of the age at primiparity. [...] and] successful females at early primiparity remained successful throughout their life	a posteriori: age at primiparity
Le Bohec et al. 2007	king penguin <i>Aptenodytes patagonicus</i>	failed breeders in year t have a lower probability to reproduce successfully in year t+1 than non-breeders in year t [...] and] successful breeders showed higher survival probability	a posteriori: successful versus unsuccessful breeders
Zheng et al. 2007	Glanville fritillary butterfly <i>Melitaea cinxia</i>	we found that mortality rate increased with age, that mortality rate was much higher during the day than during the night, and that the life span of females originating from newly established populations was shorter than the life span of females from old populations	a priori: continuous distribution of heterogeneity
Hadley et al. 2007	Weddell seal <i>Leptonychotes weddellii</i>	presence of reproductive costs to survival (mean annual survival probability was 0.91 for breeders versus 0.94 for nonbreeders) [...] and] Reproductive costs to subsequent reproductive probabilities were also present for first-time breeders (mean probability of breeding the next year was 31.3% lower for first-time breeders than for experienced breeders)	a posteriori: breeding experience

Continued

Table 1. Continued

Authors	Studied species	Main finding	Metric of individual heterogeneity
Beauplet et al. 2006	subantarctic fur seal <i>Arctocephalus tropicalis</i>	survival was lower for non-breeders than for breeders, among both prime-aged (0.938 versus 0.982) and older (0.676 versus 0.855) females [... and] non-breeders exhibited higher probabilities of being non-breeders the following year than did breeders (0.555 versus 0.414)	a posteriori: breeders versus non-breeders
Blums et al. 2005	tufted duck <i>Aythya fuligula</i> common pochard <i>Aythya ferina</i> northern shoveler <i>Anas clypeata</i>	for all three species, females that tended to nest earlier than the norm exhibited the highest survival rates, but very early nesters experienced reduced survival and late nesters showed even lower survival. For shovelers, females in average body condition showed the highest survival, with lower survival rates exhibited by both heavy and light birds. For common pochard and tufted duck, the highest survival rates were associated with birds of slightly above-average condition, with somewhat lower survival for very heavy birds and much lower survival for birds in relatively poor condition	a posteriori: relative body condition and relative time of nesting
Barbraud et al. 2005	blue petrel <i>Halobaena caerulea</i>	survival of first-time breeders was lower than that of inexperienced nonbreeders [...]. Survival of inexperienced individuals (both breeders and nonbreeders), but not of experienced ones, was negatively affected by poor environmental oceanographic conditions [... and] survival and the probability of breeding in the next year for experienced birds were higher for breeders than for nonbreeders	a posteriori: breeding experience
Wintrebert et al. 2005	kittiwake <i>Rissa tridactyla</i>	survival is positively correlated with breeding indicating that birds with greater inclination to breed also had higher survival	a priori: continuous distribution of heterogeneity
Roulin et al. 2003	tawny owls <i>Strix aluco</i>	the proportion of all breeding females that were reddish-brown was greater in years when the breeding density was lower [... and] greyish females bred less often than reddish-brown females, although their survival probability was similar	a posteriori: colour polymorphism
Reid et al. 2003	red-billed choughs <i>Pyrhocorax pyrrhocorax</i>	females that ultimately reached the greatest ages had laid small clutches and fledged few offspring during their first few breeding attempts. Females that were more productive when they were young had relatively shorter lives	a priori: lifespan
Cam et al. 2003	kittiwake <i>Rissa tridactyla</i>	individuals with shorter rearing periods had lower local survival during the first winter [... and] the length of the rearing period had long-term consequences on reproductive performance [... and] negative influence of rank on survival before recruitment and recruitment probability	a posteriori: rank and length of the rearing period
Cam et al. 2002a	kittiwake <i>Rissa tridactyla</i>	birds that were more likely to survive were also more likely to breed, given that they survived	a priori: continuous distribution of heterogeneity
Cam et al. 2002b	kittiwake <i>Rissa tridactyla</i>	squatters have a higher survival and recruitment probability, and a higher probability of breeding successfully in the first breeding attempt in all age-classes where this category is represented	a posteriori: squatters versus non-squatters
Cam and Monnat 2000a	kittiwake <i>Rissa tridactyla</i>	the influence of age on survival and future breeding probability is not the same in nonbreeders and breeders	a posteriori: yearly reproductive state

Continued

Table 1. Continued

Authors	Studied species	Main finding	Metric of individual heterogeneity
Cam and Monnat 2000b	kittiwake <i>Rissa tridactyla</i>	first-time breeders have a lower probability of success, a lower survival and a lower probability of breeding in the next year than experienced breeders [... and] neither experienced nor inexperienced breeders have a lower survival or a lower probability of breeding in the following year than birds that skipped a breeding opportunity. [... and] when age and breeding success are controlled for, there is no evidence of an influence of experience on survival or future breeding probability	a posteriori: breeding experience and breeding status

¹The literature survey was performed in ISI Web of Knowledge by looking for references corresponding to the following 'Topic' keywords: (((('individual variability' OR 'individual heterogeneity' OR 'individual quality') AND ('capture-recapture' OR 'mark-recapture' OR 'capture-mark-recapture')))). A total of 162 references were recovered. We read all summaries and only selected case studies looking for individual heterogeneity in demographic parameters estimated from CR models.

history: "For predictive or modeling purposes, [...], heterogeneity can lead to seriously misleading conclusions, particularly if the product of two or more parameters is involved, and heterogeneity affects both of them" (Johnson et al. 1986). Early work emphasized the distinction between situations where members of populations differ with respect to some measurable attribute (e.g. sex, age), and situations where "heterogeneity is not clearly identified with a measurable variable" (Johnson et al. 1986). In the latter situation, developing methods that account for heterogeneity between individuals to estimate demographic parameters is more difficult. Early efforts toward this end echo their contemporary studies of heterogeneity in mortality risk and of aging in human demography (Vaupel et al. 1979, Manton et al. 1981, Hougaard 1984): "Unrecognized heterogeneity can lead to biased inferences, especially in time or age effects in cohort studies" (Johnson et al. 1986). In ecology, one of the earliest studies that investigated the consequences of unmeasured (and sometimes impossible to measure) variation between individuals in survival probability concerned the estimation of nest success probability using longitudinal data from nest activity (Green 1977, Johnson 1979): a nest that becomes inactive before chicks hatched is considered "dead". The authors of early papers on CR modeling were aware of the contribution of human demographers to the development of models taking heterogeneity between individuals into account to estimate changes in mortality risk throughout life (e.g. papers cited in Johnson et al. 1986 included e.g. Keyfitz and Littman 1979, Vaupel et al. 1979 and Manton et al. 1981). According to Johnson et al. (1986), "the impact of such heterogeneity has been recognized only occasionally in animal ecology, possibly because it is difficult to deal with, and it is often relatively unimportant in many estimation problems."

Unobserved heterogeneity can be handled using models including a continuous or discrete distribution of parameter values (recapture, breeding or detection probability). Early work by human demographers has pioneered the use of continuous distributions of mortality risks (Vaupel et al. 1979). In survival models, continuous distributions for

individual heterogeneity translate the idea that individuals are characterized by a unique value of 'mortality risk' (or its complement, survival probability). In human demography, 'frailty' is traditionally used in time-to-event models, where the event of interest is death (data consist in the duration of time until death occurs). Generally, data from wild animals are longitudinal data (i.e. either they include information on whether individuals are alive or dead at each sampling occasion, or they include information on whether individuals are contacted alive at each sampling occasion, and sometimes on whether individuals are reported as dead). The idea that populations are composed of individuals that are more or less likely to experience an event (i.e. they differ in their probability of experiencing an event) is common to several areas of research. According to Wienke (2003), "Frailty corresponds to the notions of liability or susceptibility in different settings" (Falconer 1967). In the 1960s and 1970s, investigators developed parallel ideas in different areas of research and designed analytical methods to account for continuous distributions of 'risks' in populations. In quantitative genetics, Falconer (1967) analyzed disease incidence data and assumed a continuous distribution of risks of developing the disease: "All the causes, both genetic and environmental, that make individuals more or less likely to develop a disease, can be combined in a single measure that is called 'liability'. The liabilities of individuals in a population form a continuous variable". In econometrics, investigators developed duration models for employment data including unobserved heterogeneity (Chamberlain 1979), where "The heterogeneity is in individual specific differences in separation rates" (i.e. the fraction of employed workers who lose jobs per time interval, see also Heckman and Borjas 1980). Heckman and Willis (1977) focused on beta-logistic models for binary data of female labor participation and assumed a random effect for unobserved individual heterogeneity in participation probability: "It is reasonable to suppose that many of the unobserved variables remain reasonably constant over time but vary considerably among women". Obviously, the 1960s and 1970s stimulated the development of analytical approaches

designed to handle situations where investigators acknowledge that they do not know all the relevant variables affecting individuals' response, or where they cannot measure all of them.

Clearly, the issue raised in early CR studies is that the assumption of homogeneity of populations can lead to flawed inferences about identified parameters such as survival probability or population size (Carothers 1973). In situations where survival probability varies with age, this issue has sometimes been called a Simpson's paradox in statistics, or an "ecological fallacy" (Kramer 1983), and has been illustrated by Cohen (1986) as follows: "The crude death rate of population A may be less than that of country B even if every age-specific death rate of country A is greater than each corresponding one of country B". If populations are stratified according to variables that have not been considered yet, inequality of rates can be reversed, and any demographic parameter can be involved. Papers by Green (1977), Johnson (1979), Johnson et al. (1986) and the very influential paper by Vaupel and Yashin (1985) have all used analogous examples of situations with two groups to explain the consequences of unrecognized heterogeneity on inferences about mortality in ecology and human demography, respectively.

In the context of closed populations (i.e. assuming a population with no immigration, no emigration, no recruitment and no mortality), data are collected several times during the period when assumptions characterizing closed populations hold. CR models are restricted to the estimation of population size and can account for individual heterogeneity in the probability of being detected (Burnham and Overton 1979, Pollock 1981a, Pollock et al. 1990, Link 2004, Pledger 2005, Farcomeni and Tardella 2010). In such a situation, "Individuals with high detection probabilities would tend to appear in the encountered sample in greater proportion than they occur in the population" (White and Cooch 2017). In CR models, the probability of detection can be assumed to vary between individuals in relation to, e.g. sex or age-related behavioral differences and more recently to space (Efford 2004, Borchers 2012). In some studies, populations are not assumed to be composed of clusters (e.g. sex, age-classes) with different detection probabilities, but each individual is "assumed to have its own unique capture probability which remains constant over all the sampling times" (Pollock 1981a, Pollock et al. 1990). In CR studies where heterogeneity in the probability of detecting an individual cannot be identified using measured variables, investigators can assume that there is a distribution of individual detection probabilities and use models with individual random effects (White and Cooch 2017). In such situations, early approaches have used Jackknife estimators (Burnham and Overton 1979) or point estimators (Chao 1987). Mixture models have also been used more recently in such situations (Norris and Pollock 1996, Pledger 2000, Morgan and Ridout 2008), where populations are assumed to be composed of several hidden groups with different detection probabilities.

In the context of open populations (i.e. allowing immigration and emigration and/or recruitment and mortality to

occur), models are used to estimate a variety of demographic parameters (e.g. survival rates, transition probabilities between reproductive states in successive years, populations size). Early papers (Cormack 1964, Jolly 1965, Seber 1965) have assumed homogeneous populations. Stratification according to age-classes (Manly and Parr 1968, Pollock 1981b) and groups (Lebreton et al. 1992) was one of the first attempts to accommodate variation between individuals in survival probability. Arnason (1972, 1973), Schwarz et al. (1993), Hestbeck et al. (1991), and Nichols et al. (1994) laid the ground for models accounting for the fact that individuals might not belong to the same cluster during their entire life (Lebreton and Pradel 2002), but might move between states (e.g. locations, breeding states) in a stochastic manner (as opposed to movement between age-classes in a deterministic manner).

Naturally, early papers drew the same distinction as for closed populations between situations where individuals differ with respect to some measurable attribute (e.g. sex, age) and situations where "heterogeneity is not clearly identified with a measurable variable" (Pollock 1981a, Johnson et al. 1986). Because open-population models can be used to estimate population size, early work also focused on the consequences of heterogeneity in detection probability on population size estimation (Carothers 1973). Just as for detection probability, two approaches have been used to account for unobserved sources of heterogeneity in survival probability in CR studies (Johnson et al. 1986): finite mixture models (Pledger et al. 2003) and random effects models (Royle 2008, Gimenez and Choquet 2010). Early studies that have assumed a continuous distribution of survival probability have also highlighted the methodological difficulties encountered in the 1990s (Rexstad and Anderson 1992, Burnham and Rexstad 1993). In random effects models, individual heterogeneity refers to permanent differences between individuals in demographic parameters (Royle 2008, Gimenez and Choquet 2010). This definition matches exactly the concept of unobserved individual frailty proposed by Vaupel et al. (1979) where frailty designates the risk of a given individual (that is constant throughout its lifespan) to die at a given age relative to the average risk of all individuals in the population to die at this age. Up to now, most CR studies that have used mixture models for survival probability have also considered that individuals do not change cluster during their life (Fay et al. 2016a), but CR models can now accommodate situations where they do (see Cubaynes et al. 2010 for an application to detection probability).

Historically dominating views of what 'heterogeneity' means in CR modeling depended on the class of models used. For example, 'heterogeneity' models in early papers focusing on closed populations referred to models where "each animal has its own unique capture probability" (Pollock 1981a). Conversely, for open population models, early work on 'heterogeneity' considered any degree of stratification of populations, from discrete groups, or age-structured populations, to a distinct survival probability for each individual (Johnson et al. 1986). However, 'individual heterogeneity' has rapidly been reserved for "variation in survival probabilities

among individuals after taking into account variability due to age, sex or time” (Rexstad and Anderson 1992).

Individual heterogeneity in contemporary CR studies

Demographic parameters are the target parameters to estimate in CR models (Lebreton et al. 1992, 2009). Other parameters such as detection probability are required to estimate demographic parameters from CR models; detection probability is relevant to sampling in wild populations, but is not a demographic parameter. However, the impact of individual heterogeneity on every type of parameter has consequences on demographic parameter estimation. CR models allow the estimation of all types of parameters.

To address individual heterogeneity in demographic parameters, the survival process (alive versus dead), or the reproductive process (e.g. breeder versus non-breeder or success versus failure) is treated as a random variable. Individual heterogeneity measures differences between individuals in model parameters. Today, a broad range of approaches is used to account for individual heterogeneity in CR studies. Individual heterogeneity is understood as any source of variation between individuals in demographic parameters that cannot be accounted for by temporal or spatial heterogeneity alone, with a particular focus on the fate of individuals, their early development conditions, their ontogeny, or their past allocation to reproduction as experienced breeders. Advances in statistical methods over the past 40 years have progressively enlarged the scope of models accounting for ‘individual heterogeneity’. In CR studies, the sample scheme involves attempting to detect individuals on a discrete time basis. Contrary to continuous-time models used in human demography (Allison 1982), this specific feature must have eased the development of models in the CR arena.

Different levels of heterogeneity lead to different perceptions of ‘heterogeneity’, but the current view of ‘individual heterogeneity’ incorporates a large range of biologically relevant situations. At the lowest level individuals have their own unique demographic value (Marzolin et al. 2011; Table 1), as in the frailty context (Vaupel et al. 1979), with a possible variation during life (Enki et al. 2014). At a broader level, heterogeneity can correspond to differences in demographic parameters between identifiable categories of individuals (e.g. identifiable groups; Drummond et al. 2011), or between hidden classes or states (Péron et al. 2010, Pradel 2005, Johnson et al. 2016). Once included in the study, individuals can belong to the same cluster permanently (e.g. sex, hidden class; Péron et al. 2010) or temporarily (e.g. age, body condition, breeding state; Nichols et al. 1994, Pradel 2009, Johnson et al. 2016). What ‘heterogeneity’ covers in CR models inherently depends on model specification. In all cases, populations are considered as being heterogeneous.

From a biological viewpoint, individual heterogeneity in life history traits is often considered to include two components.

- 1) Cases in which differences between individuals are shaped early in life and are permanent during the course of the life correspond to a fixed heterogeneity. In such cases, individual heterogeneity can be accounted for by using measurable covariates a priori assumed to capture much of the individual heterogeneity (e.g. rank of offspring in birds’ clutch, Drummond et al. 2011 or body mass at the end of the maternal care period in large mammals, Hamel et al. 2009). Whether measurable individual features are translated into differences in estimates of demographic parameters, and with which method, is part of the statistical exercise. When measurable variables are missing, or insufficient to account satisfactorily for heterogeneity (Hougaard 1991), investigators can assume a discrete or continuous distribution of demographic parameters (Royle 2008, Péron et al. 2010). In agreement with the concept of frailty, investigators assume that there are differences in demographic parameters between individuals that cannot be associated with measurable covariates and use latent variables to quantify them (Hougaard 1995, Yashin et al. 2008, Cam et al. 2013, 2016, Hamel et al. 2014).
- 2) However, not all individual heterogeneity is fixed. Individual differences in a given trait at a given time are subjected not only to the influence of early-life conditions, but also to current conditions both at that time and between early life and that time. As above, in some situations, observable variables are available to account for variation in individuals’ demographic parameters throughout their life (e.g. age: Pollock 1981b; group: Lebreton et al. 1992; state: Nichols et al. 1994). However, when such observable variables are missing or inefficient at capturing most individual heterogeneity (Hougaard 1991), unobserved, latent traits changing over life can be used. Such cases correspond to ‘dynamic frailty’ (Cam et al. 2004, Pennell and Dunson 2006, Duffie et al. 2009, Chambert et al. 2013).

Irrespective of the component shaping individual heterogeneity in a given population, the total amount of individual heterogeneity in that population is not constant and varies over time. Thus, Lomnicki (1978) pointed out that asymmetric responses of individuals to increased competition that occur in presence of harsh environmental conditions (Lomnicki developed his argument in the context of density-dependence but the same pattern is expected whatever the cause of resource limitation) lead individual heterogeneity within a population to increase.

Why individual heterogeneity in a CR context?

Individual heterogeneity seen as a nuisance

Because analyzing most CR datasets requires using models that include detection probability, the existence of individual heterogeneity in this parameter has stimulated a large number of works in the early CR literature (Otis et al. 1978). As

Eberhardt (1969) pointed out, “various sets of data indicate that the equal-probability-of capture assumption is not fulfilled.” Unequal detection rates may lead to biases in abundance estimate, estimated survival probability or population growth in the context of open populations (Carothers 1973, Schwarz 2001). Heterogeneity in detection probability is still receiving attention in contemporary studies (Crespin et al. 2008, Cubaynes et al. 2010, Pradel et al. 2010, Marescot et al. 2011, Oliver et al. 2011, Fletcher et al. 2012, Abadi et al. 2013, White and Cooch 2017), and new methods are being developed to address heterogeneity, such as multievent models (Pradel 2009).

Individual heterogeneity as a biological process

Methodological developments of CR models have considerably increased the relevance of CR studies to address questions not only in ecology, but also in evolution. A key feature of this development is the increased ability of CR models to account for variation between individuals in demographic parameters as well as detection probability at the scale assumed to be relevant in the studied context. This scale can be the individual, rather than permanent groups (e.g. sex), or temporary aggregates of individuals (e.g. reproductive states). The development of evolutionary biology as a powerful conceptual and methodological framework for biological disciplines (Dobzhansky 1973) has brought a new perspective on individual heterogeneity. In CR studies, instead of being addressed because of potential biases in estimates of abundance, survival probability or population growth rate (Crespin et al. 2008, Cubaynes et al. 2010, Pradel et al. 2010, Oliver et al. 2011, Abadi et al. 2013), individual heterogeneity has become the focus of studies because of its biological relevance. For evolutionary biologists, the individual level can be relevant to address natural selection if heritable variation is expressed at this level (Chambert et al. 2014). In addition, variation between individuals in demographic parameters is relevant to population ecology and dynamics, whether it concerns traits that are heritable, or not, and whether it can be accounted for using observed variables, or not (Kendall and Fox 2002). Indeed, both population extinction risk and viability depend on the degree and structure of individual heterogeneity in survival probability and reproductive parameters (Conner and White 1999, Stover et al. 2012).

Starting from classes of models where demographic parameters varied with time (Jolly 1965), groups of individuals, or age, the development of software programs to build multistate models (Arnason 1972, 1973) in the 1990s has considerably increased the attractiveness of CR models. These models indeed allow biologists to address questions about a large range of factors structuring a population, which determine individual sequences of states between which individuals move in a stochastic manner (Nichols et al. 1994, Nichols and Kendall 1995). These models triggered studies of life histories using CR models (Cam et al. 1998, Hadley et al. 2007). Another class of approaches, multievent models (Pradel 2005), has also helped biologists address questions

about the influence of ‘state’ on demographic parameters (Sanz-Aguilar et al. 2011). Indeed, one of the difficulties in CR studies is that ‘state’ may not be observed with certainty, or even not be observed at all (Desprez et al. 2013). Moreover, the development of user-friendly software to build models with individual covariates has also stimulated work in evolutionary ecology using CR data (Gimenez et al. 2009). The question of time-specific individual covariates with missing values is still a current issue (Bonner and Schwarz 2006). The ability of CR models to accommodate variation between individuals in demographic parameters raises the issue of methods of inference about model parameters in CR studies (Pledger and Schwarz 2002, Royle 2008, Gimenez and Choquet 2010). This issue is tightly linked to the level of stratification of populations, or of aggregation of observations (Cooch et al. 2002). As emphasized by Nichols (2002): “If we view an individual organism’s fate or behavior at any point in space and time as a unique event not capable of informing us about the likelihood of the event for other individuals or points in space and time, then generalization and prediction become impossible”. To allow formal statistical inferences about variation in demographic parameters and detection probability in populations, CR models rely on assumptions, notably regarding unobserved heterogeneity (e.g. a distribution of random effects; Royle 2008, or a mixture model; Péron et al. 2010, Marescot et al. 2011).

Assessing senescence in the wild: an increasingly popular focus of CR studies

The process of senescence, which can be interpreted in the context of the allocation principle as the tradeoff opposing performance during early life and performance in late life (Baudisch and Vaupel 2012, Lemaître et al. 2015), has been the focus of a large number of empirical studies during the last decade (reviewed by Nussey et al. 2013). As imperfect detection of individuals is the rule in free-ranging populations (Gimenez et al. 2008), CR has become the gold standard to measure reliably actuarial senescence in the wild (Loison et al. 1999, Bouwhuis et al. 2012). The question of level of inference has recently emerged as a critical point in CR studies of senescence (Péron et al. 2010, Marzolin et al. 2011). Based on early work by human demographers addressing heterogeneity in mortality risk (Vaupel et al. 1979), ecologists have often used the concept of frailty. However, Vaupel and Yashin (1985) considered the case of a heterogeneous population with two classes of individuals, frail and robust ones. As time passes and individuals age, there is a disjunction between the variation of the mean survival probability (i.e. when pooling frail and robust individuals) with age, and the variation in survival probability with age within each group (Fig. 1, 2). Ignoring heterogeneity in mortality risk may lead to flawed inferences about aging rate (Vaupel and Yashin 1985, Zens and Peart 2003), a phenomenon documented in wild animals using CR models (Nussey et al. 2008, Péron et al. 2016). This phenomenon has long been acknowledged in wildlife studies

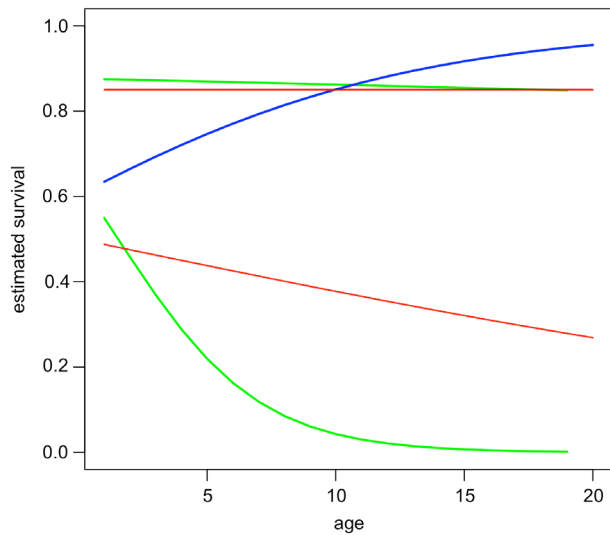


Figure 1. Senescence is masked when individual heterogeneity is not accounted for: random-effect capture–recapture model. We simulated the fate of 500 individuals (in grey) from a single cohort with survival decreasing as they age over a 20-year study. We also added a frailty for each individual $\text{logit}(\phi_i(a)) = \beta_0 + \beta_1 a + \varepsilon_i$ where $\varepsilon_i \sim N(0, \sigma^2)$. We used $\beta_0 = 1$, $\beta_1 = -0.05$, and $\sigma = 1$. We considered the same detection probability $p = 0.5$ for all individuals. We report the age-specific survival patterns from two models in which 1) we ignored individual heterogeneity (in blue) and 2) we incorporated an individual random effect to handle with this source of heterogeneity (in green), both to be compared to the actual trend that we used to simulate the data (in red). Clearly, ignoring individual heterogeneity obscures senescence in survival. We refer to the Supplementary material Appendix 1 for more details.

for life stages other than senescence (e.g. nest mortality; Green 1977 and Johnson et al. 1986 and Burnham and Rexstad 1993 in the context of CR studies). The consequences of ignoring individual heterogeneity in survival probability have also been investigated in CR studies using special datasets with perfect detection of individuals (Cam et al. 2002a, 2013, Wintrebert et al. 2005, Fox et al. 2006, Aubry et al. 2011, Knape et al. 2011).

The requirement of accounting for heterogeneity in survival studies was raised by human demographers very early (which distribution to use to account for individual heterogeneity in mortality risk, Manton et al. 1986) and has become a key topic in ecology. Some demographers argued that observable criteria might not account for individual heterogeneity in a satisfactory manner, and developed mixed models or mixture models for time to event data (Kannisto 1991, Abbring and Van Den Berg 2007). The debate about the appropriate distribution to consider is also taking place in ecology (Gimenez and Choquet 2010, Péron et al. 2010, 2016). However, in CR studies, biologists use discrete data (e.g. mixed binomial models for survival), which may lead to fewer issues with parameter identifiability and assumptions than hazard models with frailty (Wienke 2010). Moreover, to some extent, the idea of addressing heterogeneity

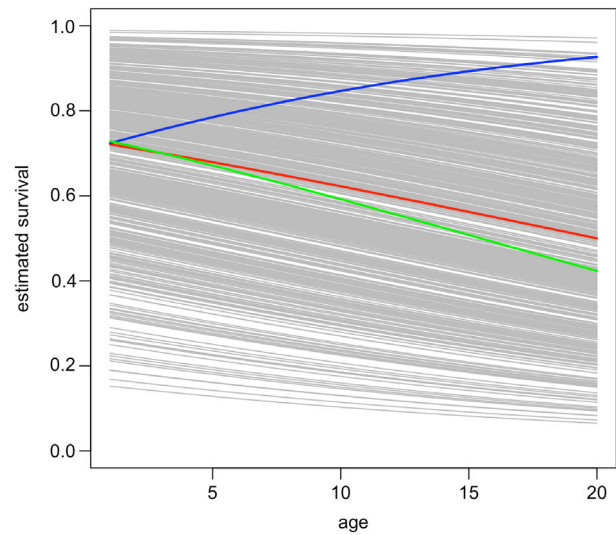


Figure 2. Senescence is masked when individual heterogeneity is not accounted for: finite-mixture capture–recapture model. We simulated the fate of 1000 individuals from a single cohort that were split into a group of robust individuals in proportion π with constant high survival ϕ_R and a group of frail individuals with survival ϕ_F that aged over the 20 years of the study according to the relationship $\text{logit}(\phi_f(a)) = \beta_0 + \beta_1 a$. We used $\pi = 0.3$, $\phi_R = 0.85$, $\beta_0 = 0$ and $\beta_1 = -0.07$. We considered the same detection probability $p = 0.5$ for all individuals. We report the age-specific survival patterns from two models in which 1) we ignored individual heterogeneity (in blue) and 2) we used mixture models with two hidden classes of individuals to handle with heterogeneity (in green), both to be compared to the actual trend that we used to simulate the data (in grey). Clearly, ignoring individual heterogeneity obscures senescence in survival. We refer to the Supplementary material Appendix 1 for more details.

using a distribution of latent demographic traits is coherent with approaches to quantify variation in populations that are familiar to evolutionary biologists, namely, variances in traits in quantitative genetics (Lynch and Walsh 1998, Chambert et al. 2013, 2014). Recently capture–recapture animal models (CRAM) have been developed to estimate heritability of demographic parameters (Papaïx et al. 2010).

Detection of tradeoffs between life history traits

Tradeoffs are one of the cornerstones of the theory of life histories (Roff 1992). They are based on the principle of allocation (Cody 1966) and express the idea that individuals possess a limited amount of energy and have thereby to share energy among various functions so that individuals allocating a lot of energy into current reproduction cannot allocate as much into survival or future reproduction (Roff 1992). However, empirical analyses have often failed to detect tradeoffs in the wild because of individual heterogeneity in resource acquisition. van Noordwijk and de Jong (1986) indeed demonstrated that positive associations between current reproduction and future survival or reproduction occur when individual heterogeneity in resource acquisition is greater

than individual heterogeneity in resource allocation. The development of multistate models has attracted evolutionary biologists to study tradeoffs within the CR arena (Cam et al. 1998, Yoccoz et al. 2002). Individuals are assumed to make allocation decisions according to their own state (McNamara and Houston 1996). Consequently, any unobserved feature of ‘state’ may explain why tradeoffs are not detected. Experimental approaches may help unveil tradeoffs (Reznick 1985), but may also go against heterogeneity (Festa-Bianchet et al. 1998, Yoccoz et al. 2002). At the extreme, each individual can be assumed to be in a unique ‘state’ that cannot be measured, and tradeoffs might not be detected. Some observational CR studies have provided evidence of tradeoffs after identifying traits that reliably described changes in individual state (e.g. social rank, mass, etc., Hamel et al. 2009), by taking advantage of unfavorable conditions (Descamps et al. 2009) or by distinguishing direct from indirect effects (Cubaynes et al. 2012a). The development of hierarchical CR models with individual heterogeneity has allowed investigators to assume a distribution of latent life history traits in populations (Royle 2008, Gimenez and Choquet 2010). In particular, Buoro et al. (2010, 2011) have been successful at detecting tradeoffs using this type of approach.

How to infer individual heterogeneity in CR models

In this section, we provide details about the CR models used in the case studies reviewed above. Specifically, we focus on multistate, random-effect and finite-mixture CR models possibly including individual covariates because these are currently the most commonly used tools to incorporate individual heterogeneity and deal with detectability less than one. We focus on survival and open populations in the following tutorial, but the methods are applicable to other CR model parameters (Matechou et al. 2016), including the detection probability, and in other contexts such as closed populations. For the sake of illustration, we simulate data in R that we analyze 1) in a frequentist framework using maximum likelihood methods with program MARK (White and Burnham 1999) called from R using the package RMark (Laake 2013; alternatively, see the R package marked by Laake et al. 2013) and E-SURGE (Choquet et al. 2009) and 2) in a Bayesian framework using Markov chain Monte Carlo methods with program JAGS (Plummer 2003) called from R using the package R2Jags. Below we present results from the frequentist approach only. The code to simulate data and fit CR models is available in the Supplementary materials and from GitHub (<https://github.com/oliviergimenez/indhet_in_CRmodels>).

Measured individual heterogeneity: individual covariates and multistate CR models

Individual covariates

We start with a simple example of an individual i with the encounter history $h_i=101$ where ‘1’ is for detected and ‘0’

for non-detected. Here, individual i was detected on the first sampling occasion, then missed and eventually detected again on the last sampling occasion. We consider the Cormack–Jolly–Seber model for open populations and assume that neither survival probability ϕ between two sampling occasions nor detection probability p at a sampling occasion vary between individuals. Then, the contribution of individual i to the model likelihood is:

$$\Pr(h_i) = \phi(1-p)\phi p \quad (1)$$

Now let us assume that we are able to measure individual heterogeneity under the form of an individual covariate, say x_i , which takes a specific value for individual i (Pollock 2002). We assume the covariate to characterize the individual throughout the CR study (i.e. it is not a time-varying covariate). Then, individual variation in the survival probability (or the detection probability) can be partly explained by this covariate through:

$$\text{logit}(\phi_i) = \beta_0 + \beta_1 x_i \quad (2)$$

where ϕ_i is the survival probability for individual i , $\text{logit}(u) = \log\left(\frac{u}{1-u}\right)$ is the logit function and is used here as

a constraint to make sure that survival is estimated between 0 and 1, and the β 's are regression coefficients to be estimated (North and Morgan 1979). Assuming now a model with individual-specific survival, Eq. 1 becomes:

$$\Pr(h_i) = \phi_i(1-p)\phi_i p \quad (3)$$

We do not estimate survival for each individual, but instead the regression coefficients β 's in Eq. 2 by first using the reciprocal

logit function $\text{logit}^{-1}(v) = \frac{\exp(v)}{1+\exp(v)} = \frac{1}{1+\exp(-v)}$ in Eq. 2

and plugging in the result in Eq. 3:

$$\Pr(h_i) = \frac{1}{1+\exp[-(\beta_0 + \beta_1 x_i)]} (1-p) \frac{1}{1+\exp[-(\beta_0 + \beta_1 x_i)]} p \quad (4)$$

The covariate x_i may be continuous such as body mass or discrete such as sex. If the covariate is discrete, it is usually referred to as a group in the CR literature (Lebreton et al. 1992).

So far, we have assumed that this covariate does not vary over time, in other words that an individual i has the same value x_i of the covariate whatever the sampling occasion (i.e. matching with the concept of frailty *sensu stricto*). When dealing with time-varying individual covariates, which matches the concept of dynamic frailty (for unobserved heterogeneity), we then need to distinguish between discrete and continuous covariates.

Discrete time-varying individual covariates and multistate CR models

Discrete time-varying individual covariates are referred to as ‘states’ in the CR literature (e.g. breeder/non-breeder

or infected/non-infected), and are analyzed with so-called multistate CR models (Schwarz et al. 1993, Lebreton et al. 2009). Let us assume that we measure a time-varying individual covariate with two levels, A and B, and that individual i has now the encounter history $h_i = A0B$ with obvious interpretation. Two things might have happened on the second sampling occasion at which the individual was not detected: either it stayed in state A or it made a transition to state B. The transition event immediately calls for the introduction of additional parameters, namely the transition probability ψ^{AB} from state A to state B and ψ^{BA} from state B to state A. The probability of staying in state A (or B) is obtained as the complementary probability $\psi^{AA} = 1 - \psi^{AB}$ (or $\psi^{BB} = 1 - \psi^{BA}$). The two events ‘being alive in state A’ and ‘being alive in state B’ at the second sampling occasion cannot occur together: these are mutually exclusive. As a result, the contribution of individual i to the model likelihood has two components depending on the actual underlying encounter history AAB or ABB:

$$\Pr(h_i) = \phi_A (1 - \psi^{AB}) (1 - p) \phi_A \psi^{AB} p + \phi_A \psi^{AB} (1 - p) \phi_B (1 - \psi^{BA}) p \quad (5)$$

Note that p does not depend on state for simplicity, but this does not need to be the case. An example of the use of multistate CR models to detect life-history tradeoffs in the presence of individual heterogeneity is provided in Table 2.

Continuous time-varying individual covariates

Continuous time-varying individual covariates are difficult to deal with. Ideally, we have:

$$\Pr(h_i) = \phi_{i1} (1 - p) \phi_{i2} p \quad (6)$$

with

$$\text{logit}(\phi_{it}) = \beta_0 + \beta_1 x_{it} \quad (7)$$

where ϕ_{it} is the survival probability for individual i between sampling occasions t and $t+1$ and x_{it} is the value of the covariate for individual i at occasion t . However, this only corresponds to the ‘ideal’ situation because when an individual is not detected at a particular sampling occasion, then the value of the covariate is generally unknown, which makes it impossible to form Eq. 7. A first possibility is to omit individuals with missing values or to replace the missing values by, for example, the mean of all covariate values observed for an individual. These ad hoc approaches result in a loss of information and bias in parameter estimates and should be avoided (Kendall et al. 2003, Lee et al. 2016). A more formal approach consists in imputing missing covariate values from an underlying distribution that is used to model the change in covariate values over time, typically a first-order Markov process such as a random walk (Bonner and Schwarz 2006, Langrock and King 2013; see also Worthington et al. 2015). A second possibility involves the discretization of the covariate in two or more levels so that multistate CR models can be used (Nichols et al. 1992). Lastly, inference can be based on a conditional likelihood approach using only the observed covariate values – the so-called trinomial approach (Catchpole et al. 2010). Several studies have compared the statistical performances of these methods (Bonner et al. 2010, Langrock and King 2013) and found that imputation methods were sensitive to the covariate model and that all methods were sensitive to the detection probability and the number of missing values. In practice, discretizing the continuous covariate and using multistate CR models is a pragmatic approach that can easily be implemented in existing software packages.

Unmeasured individual heterogeneity: random-effect and finite-mixture CR models

If for some reason, heterogeneity cannot be measured, or there is a reason to believe that individual covariates do not capture the relevant variation, it can yet be incorporated using two approaches.

Table 2. Detection of a tradeoff between reproduction and survival using multistate capture–recapture models after individual heterogeneity is accounted for. We simulated multistate capture–recapture data with two states, non-breeding (NB) and breeding (B). To mimic individual heterogeneity, we considered robust individuals with NB survival equal to 0.7 and B survival equal to 0.8 and frail individuals with NB survival equal to 0.7 and B survival equal to 0.6, the only difference being in the survival of frail breeders that is much lower than that of robust breeders. For each group, we simulated the fate of 100 newly marked individuals in each year of a 6-year experiment. We report parameter estimates from two multistate models in which 1) we ignored individual heterogeneity (column ‘ignoring individual heterogeneity’) and 2) we explicitly incorporated an individual covariate to handle this source of heterogeneity (column ‘incorporating individual heterogeneity’). The parameters we used to simulate the data are given in the column ‘truth’. We refer to the Supplementary material Appendix 1 for more details. The cost of breeding on survival is detected only in frail individuals after accounting for individual heterogeneity through quality ($\Delta\text{AICc}=120$).

Parameter	Ignoring individual heterogeneity	Incorporating individual heterogeneity	Truth
Survival of frail non-breeders	0.69 [0.67; 0.72]	0.70 [0.66; 0.73]	0.7
Survival of frail breeders	0.70 [0.68; 0.72]	0.58 [0.55; 0.61]	0.6
Survival of robust non-breeders	0.69 [0.67; 0.72]	0.69 [0.65; 0.72]	0.7
Survival of robust breeders	0.70 [0.68; 0.72]	0.80 [0.77; 0.82]	0.8
Transition from non-breeding to breeding	0.78 [0.75; 0.80]	0.78 [0.75; 0.80]	0.8
Transition from breeding to non-breeding	0.31 [0.29; 0.33]	0.31 [0.28; 0.33]	0.3
Detection	0.90 [0.88; 0.91]	0.90 [0.88; 0.91]	0.9

Random-effect CR models

The usual random-effect approach has been adapted to CR models (Coull and Agresti 1999, Royle 2008, Gimenez and Choquet 2010). We write:

$$\text{logit}(\phi_i) = \beta_0 + \varepsilon_i \quad (8)$$

where the ε_i 's are normally distributed with mean 0 and variance σ^2 to be estimated, which is to be plugged in Eq. 3 using the reciprocal logit function. To fit this random-effect model, one can adopt a Bayesian (Royle 2008) or a Frequentist approach (Gimenez and Choquet 2010). More complex structures in the random effects can be considered (heritability: Papaix et al. 2010; nested effects: Choquet et al. 2013). An example of the use of random-effect CR models to detect senescence in the presence of individual heterogeneity is provided in Fig. 1.

Finite-mixture CR models

Another avenue to handle with unobserved individual heterogeneity is to use finite-mixture models (Pledger et al. 2003, 2010, Pledger 2005, Pledger and Phillpot 2008). These models assume that individuals can be categorized into a finite number of heterogeneity classes (hidden states). More explicitly, an individual may be alive in class C_1 or class C_2 . Then,

$$\Pr(b_i) = \pi \phi^{C_1} (1-p) \phi^{C_1} p + (1-\pi) \phi^{C_2} (1-p) \phi^{C_2} p \quad (9)$$

where π (resp. $1-\pi$) denotes the proportion of newly marked individuals in class C_1 (resp. C_2). Transition between classes can be considered (Pradel 2009). An example of the use of finite-mixture CR models to detect senescence in the presence of individual heterogeneity is provided in Fig. 2.

Hidden-Markov modeling framework

CR models can be fruitfully expressed as state-space models in which the biological process (survival for example) is explicitly distinguished from the observation process (detection) (Gimenez et al. 2007, 2012, Royle 2008, King 2012). In particular, multistate CR models incorporating uncertainty in state assignment – multievent CR models – have been formulated as hidden-Markov models (HMM; Zucchini et al. 2016) by Pradel (2005; reviewed by Gimenez et al. 2012), a particular case of state-space models in which the states are Markovian (i.e. the next state depends only on the current state and not on the sequence of states that occurred before). An advantage of the HMM formulation of CR models is that it provides high flexibility in the way individual heterogeneity is modeled. For example, the HMM formulation of finite-mixture CR models can easily be extended to consider transitions between classes of heterogeneity (Pradel 2009, Cubaynes et al. 2010). Let us define the states alive in class 1 (' C_1 '), alive in class 2 (' C_2 ') and dead ('D'). The individuals can go undetected ('0') or detected ('1'). Initially, the state of an individual is driven by the vector of initial state probabilities:

$$\Pi = [\pi \quad 1-\pi \quad 0]$$

where the states C_1 , C_2 and D are in columns in that order. Then the observation process at first capture applies through:

$$B_1 = \begin{bmatrix} 0 & 1 \\ 0 & 1 \\ 1 & 0 \end{bmatrix}$$

where the states are in rows and the observations (or events) are in columns (0 and 1 in that order). Now that the fate of individuals at first capture occasions is modeled, the survival and observation processes occur successively at the subsequent occasions. The survival process is governed by:

$$\Phi = \begin{bmatrix} \phi^{C_1} & 0 & 1-\phi^{C_1} \\ 0 & \phi^{C_2} & 1-\phi^{C_2} \\ 0 & 0 & 1 \end{bmatrix}$$

where the states at t are in rows and the states in $t+1$ are in columns. Individuals can be allowed to move from one heterogeneity class to the other through transition probabilities Ψ by multiplying the survival matrix by a transition matrix:

$$\Phi = \begin{bmatrix} \phi^{C_1} & 0 & 1-\phi^{C_1} \\ 0 & \phi^{C_2} & 1-\phi^{C_2} \\ 0 & 0 & 1 \end{bmatrix} \begin{bmatrix} 1-\psi^{C_1 \rightarrow C_2} & \psi^{C_1 \rightarrow C_2} & 0 \\ \psi^{C_2 \rightarrow C_1} & 1-\psi^{C_2 \rightarrow C_1} & 0 \\ 0 & 0 & 1 \end{bmatrix}$$

The observation process at occasion t is modeled using:

$$B_2 = \begin{bmatrix} 1-p & p \\ 1-p & p \\ 1 & 0 \end{bmatrix}$$

where states are in rows and observations in columns. The probability in Eq. 9 can be written as the product of the matrices above (Pradel 2005).

Is individual heterogeneity statistically relevant?

Testing the statistical relevance of individual heterogeneity can be done in two ways. First, the quality of fit of models with heterogeneity to CR data can be assessed using goodness-of-fit tests. An ad-hoc procedure was proposed in the context of finite-mixture models by considering specific combinations of components of the goodness-of-fit test for homogeneous models (Péron et al. 2010). A more formal approach is being developed (Jeyam et al. pers.comm.) based on methods used in behavioral sciences. Second, models with and without heterogeneity can be compared using hypothesis testing or model selection. For multistate models, model selection using the Akaike information criterion (AIC; Burnham and Anderson 2002) is usually favored as illustrated in Table 2. In the Bayesian context, several methods have been used

and we refer to review papers for guidelines (O'Hara and Sillanpää 2009, Tenan et al. 2014, Hooten et al. 2015). In random-effect models, the question boils down to testing whether the variance of the random effect is zero, which can be addressed using likelihood ratio tests (Gimenez and Choquet 2010) but may be difficult to do in a model selection framework (Bolker et al. 2009). We refer to O'Hara and Sillanpää (2009) for Bayesian methods (see also Royle 2008, Chambert et al. 2014). In finite-mixture models, standard tools from the model selection framework, namely the AIC, can be used (Cubaynes et al. 2012b), although it may fail in the context of detecting senescence (Supplementary material A in Péron et al. 2016). In a Bayesian context, the deviance information criterion (DIC; Spiegelhalter et al. 2014) is known to perform poorly on mixture models, and the Watanabe–Akaike information criteria (wAIC; Gelman et al. 2014) holds promise in this context, although it is yet to be used with CR models.

Discussion and research perspectives

Random effects versus mixture?

In studies based on CR models built in the context of closed or open population CR models, as well as in human demography, there is currently a debate about the distribution to consider to account for individual heterogeneity in demographic parameters (Yashin et al. 2001, Péron et al. 2010). This debate sometimes focuses on the biological justification of continuous distributions versus mixture models (Péron et al. 2010). The debate also focuses on alternatives to distributions that might be unrealistic or inadequate (Péron et al. 2010). This question is not specific to CR modeling (Hamel et al. 2016). Clusters of individuals sharing values of latent traits can be identified using mixture models. Recently, Hamel et al. (2016) addressed the question of the identification of reproductive and growth tactics in long-lived mammals using mixture models. They also used simulations and showed that in many cases the number of clusters can be chosen using an information theoretic or a bootstrap approach. Alternatively, infinite mixture models could be developed for CR data (Rasmussen 2000, Ohlssen et al. 2007, Raman et al. 2010), where the number of clusters is a priori very large, but the number of clusters including at least one individual is estimated and can range from 1 to a large number; the latter situation leads to a distribution of demographic parameters that approaches a continuous one (Ohlssen et al. 2007). Rather than comparing models that vary in complexity using for instance an information criterion, Bayesian nonparametric approaches fit a single model that can adapt its complexity to the data (Gershman and Blei 2012; see Ford et al. 2015 and Manrique-Vallier 2016 for applications to CR models). Moreover, the question of how to account for heterogeneous detection probability in CR models designed to estimate population size has a very long history (Carothers 1973, Link 2003, Ghosh and Norris

2005). Carothers (1973) investigated the consequences of violations of the assumption of equal detection probability on estimates from the Jolly–Seber model. He concluded that “any distribution is, from the point of view of investigating bias, as good as any other with the same [mean detection probability] and [coefficient of variation], and it is therefore justifiable to select a distribution on the grounds of computational convenience alone”. The number of classes might be itself of interest, but in the framework of closed populations, there is no straightforward means of determining the number of components of a mixture model for detection probability (Link 2003), and it is strongly advised against trying to interpret the mixture parameters (Shirley Pledger pers. comm.).

Change in latent values of demographic parameters over lifetime

In standard models for longitudinal data with individual heterogeneity, an independent subject-specific random effect is assumed to be constant over time for each subject (Vaupel and Missov 2014), which matches early versions of the concept of frailty (Vaupel et al. 1979). Generally, in CR studies using mixture models, each individual is also assumed to be a member of a latent class when it enters the study, and it does not change class. Mortality risk or breeding success at time 0 (when the individual enters the study) is assumed to be perfectly correlated with the risk later in life (Wienke 2010). However, this assumption does not necessarily hold, and models accommodating changes in individual latent vital rates may offer an interesting basis to test biological hypotheses. An alternative approach allowing individuals to experience (reversible) changes in latent vital rates could be based on the ontogenetic view of individual differences (Senner et al. 2015). This can be achieved with ‘dynamic frailty’ models (Manda and Meyer 2005, Putter and Van Houwelingen 2014), hidden Markov models (Johnson et al. 2016), Latent Class transition models or mixture models, in which individuals can change latent class over time (Kaplan 2008). Hidden Markov models are now commonly used in CR studies, but specific applications to change in latent demographic parameters are still rare (Pradel 2005, Cubaynes et al. 2010).

Initial conditions

An overlooked issue in CR studies using multistate models is the issue of ‘initial conditions’. Before estimating the parameters of a model accounting for a stochastic process with dependence between consecutive states (e.g. breeding states), one has to think about how the process was ‘initialized’. Studies of reproduction necessarily start recording breeding outcomes at the first breeding event (recruitment, or first observed breeding attempt). More generally, studies modeling reproductive outcomes from recruitment onwards (Cam et al. 1998, Yoccoz et al. 2002) assume that the start of the process generating the observed reproductive states coincides with the start of reproductive life for each individual

(Wooldridge 2005). Nevertheless, the process governing the first breeding outcome can be the same as the process generating the subsequent observations in the individual lifetime trajectory (Skronal and Rabe-hesketh 2014). Such a process can include unobserved determinants of breeding outcome. In dynamic models of reproduction incorporating the effect of past breeding outcome at time t on the probability of breeding successfully at time $t + 1$ (e.g. multistate CR models), the outcome of the first reproductive attempt (at time t) is not considered as the realization of a random process, because there is no reproduction at time $t - 1$. Nevertheless, failure to incorporate unobserved factors governing breeding success probability at recruitment can translate into overestimation of transition probabilities between subsequent reproductive states (Heckman 1981, Prowse 2012). This is particularly problematic in studies of changes in reproductive costs throughout the lifetime (Sanz-Aguilar et al. 2008), or of experience-specific variation in breeding outcome (Nevoux et al. 2007). Interestingly, Sanz-Aguilar et al. (2008) have interpreted evidence of higher reproductive costs of reproduction at recruitment as a consequence of within-cohort mortality selection, with frailer individuals incurring higher reproductive costs than robust ones. The initial conditions problem can be overcome using a joint modeling approach of the processes governing reproductive success at recruitment and subsequent breeding occasions (Skronal and Rabe-hesketh 2014). If CR data are available from the pre-breeding period, then unobserved and observed determinants of breeding state can be considered simultaneously (Fay et al. 2016b).

Inference about individual heterogeneity

Two papers have revived interest in unobserved heterogeneity in demographic parameters in CR studies: Steiner et al. 2010 and Orzack et al. 2011. More specifically, these papers have drawn attention to the approaches used to discriminate between hypotheses about sources of variation in CR histories. In CR studies, an influential book by Burnham and Anderson (2002) has promoted the use of multimodel inference such as information criteria to address non-mutually exclusive biological hypotheses about the processes governing mortality, or the arrangement of reproductive states over lifetime trajectories of animals. For example, models accounting for state-dependence in survival or reproduction can be considered (multistate or multievent models; Sanz-Aguilar et al. 2008), models accounting for unobserved heterogeneity in these demographic parameters too (Royle 2008, Marzolin et al. 2011), as well as models accounting for both sources of variation in survival and reproduction (Fay et al. 2016a). This contrasts with approaches based on a single model (namely, state-dependence) and evaluation of the degree of consistency of observed individual CR histories with metrics summarizing key features of histories simulated using parameters estimated with the model in question (Steiner et al. 2010, Orzack et al. 2011).

By definition, variation in individual trajectories simulated using parameters estimated with multistate CR

models is not caused by fixed, unobserved heterogeneity between individuals in their demographic parameters (Tuljapurkar et al. 2009, Steiner and Tuljapurkar 2012). The variation in arrangements of states in simulated data stems from the realization of random variables governed by probabilities; the resulting pattern is called ‘dynamic heterogeneity’ (Tuljapurkar et al. 2009), or ‘individual stochasticity’ (Caswell 2009). Several papers have provided evidence that there is a good match between observed and simulated features of individual histories (Steiner et al. 2010, Orzack et al. 2011, Steiner and Tuljapurkar 2012). These studies suggest that stochastic demographic processes have been overlooked in life history studies, and that latent, unobserved heterogeneity in demographic parameters might have been overstated in studies of longitudinal data from animals, whether detection probability is lower than one or not (Cam et al. 2002a, 2013, Steiner et al. 2010, Orzack et al. 2011). From a conceptual viewpoint, these studies attempt to caution biologists against over-interpreting amounts of unobserved individual heterogeneity in demographic parameters (“biologists commonly argue that large differences in fitness components are likely adaptive, resulting from and driving evolution by natural selection” Steiner and Tuljapurkar 2012, Cam et al. 2016). However, they have moved away from one of the dominating statistical inference approaches in the CR area, namely multimodel inference and information criteria (Burnham and Anderson 2002). Current research is addressing the question of whether simulations based on multistate CR models or simply models with state-dependence used for longitudinal data analysis allow discriminating between alternative hypotheses about the processes generating variability in individual histories (Plard et al. 2012, Bonnet and Postma 2016, Cam et al. 2016).

Importantly, proponents of dynamic heterogeneity have overlooked notes of caution from other areas of research also using multistate models for inferences about longitudinal data concerning possible biases in estimates of ‘state-dependence’ (Heckman 1981, Ahmad 2014). A key issue in discriminating between processes generating variation in individual histories is that a Markov process (i.e. the basis of multistate models) and unobserved individual heterogeneity (for instance a random effect model, Royle 2008) can create similar patterns in arrangements of states along individual trajectories (Ahmad 2014, Authier et al. 2017). This issue has stimulated a large body of work in econometrics (Heckman 1981, Ahmad 2014, Skronal and Rabe-hesketh 2014, Andriopoulou and Tsakoglou 2015). The hypothesis of a ‘communicating vessels’ phenomenon between sources of variation in CR histories should be considered in wild animal populations, as in econometrics studies (Ahmad 2014, Plum and Ayllón 2015, Cam et al. 2016). Interestingly, several CR studies have hypothesized that their results obtained using multistate models partly reflect heterogeneity between individuals in baseline breeding and survival probability (Cam et al. 1998), or phenotypic within-cohort mortality selection (i.e. the change in the composition of

a heterogeneous cohort including individuals with different baseline survival probabilities; Cam et al. 2002a, Barbraud and Weimerskirch 2004, Nevoux et al. 2007, Sanz-Aguilar et al. 2008). That is, they have hypothesized that their result may be caused by unobserved individual heterogeneity, a question now being addressed in studies of senescence (Péron et al. 2010, 2016). This suggests that CR models with both a Markovian structure (for observable, partially observable, or unobservable states) and unobserved individual heterogeneity might perform well with some datasets from wild animal populations (Fay et al. 2016a, b).

Conclusion

Our review, although not exhaustive, demonstrates that the tremendous advances in CR modeling accomplished over the past 40 years provide investigators with a reliable way to address multiple facets of the process of individual heterogeneity in demographic parameters. Pioneer works by quantitative wildlife biologists focused on individual heterogeneity in recapture or survival probability to avoid biased estimates of population size. The emergence of more general questions such as cause-specific sources of mortality in game- and non-game species (Johnson et al 1986, Koons et al. 2014) and the need for accurate assessment of the impact of global change on the demography of structured populations (Gullett et al. 2014) have triggered collaborations between biologists and statisticians to make efficient use of data, robust inferences about demographic parameters, and achieve an increasing degree of realism in both the sampling and ecological processes handled by CR models. As emphasized by Conroy (2009), the nature of questions that can be addressed nowadays has been greatly expanded to include evolutionary ecology, whose cornerstone is variation in demographic parameters between individuals both within and between populations. The relevance of dealing with individual heterogeneity to study eco-evolutionary processes has placed the topic of individual heterogeneity at the core of many empirical investigations using CR data (Table 1). Provided appropriate sampling design and sufficient data are available, the flexibility of modern CR models now allows assessing reliably the role of individual heterogeneity in ecology and evolutionary processes in the wild.

Data deposition

Data available from the Github: <https://github.com/oliviergimenez/indhet_in_CRmodels> (Gimenez et al. 2017).

Acknowledgements – We are grateful to Jim Nichols, Doug Johnson and Ken Burnham for sharing ideas and material on their early work focusing on the consequences of individual heterogeneity in survival on population dynamics, and the development of CR models accounting for heterogeneity in survival and recapture probability. Evan Cooch provided material on ongoing analyses completing this early work with alternative methods, and Jim Nichols provided helpful comments on an earlier version of this

paper. We also thank Nigel Yoccoz for insightful suggestions that improved the paper. OG's contribution to this paper relies mostly on his 'Habilitation à Diriger des Recherches' for which he warmly thanks his family, friends, colleagues and students for support, help and inspiration.

Funding – EC was supported by the Laboratoire d'Excellence LabEx TULIP (ANR-10-LABX-41). OG was supported by ANR-16-CE02-0007.

References

- Abadi, F. et al. 2013. Revisiting the effect of capture heterogeneity on survival estimates in capture–mark–recapture studies: does it matter? – *PLoS One* 8: e62636.
- Abbring, J. H. and Van Den Berg, G. J. 2007. The unobserved heterogeneity distribution in duration analysis. – *Biometrika* 94: 87–99.
- Ahmad, N. 2014. State dependence in unemployment. – *Int. J. Econ. Financ. Issues* 4: 93.
- Allison, P. D. 1982. Discrete-time methods for the analysis of event histories. – *Sociol. Methodol.* 13: 61–98.
- Andriopoulou, E. and Tsakoglou, P. 2015. Once poor, always poor? Do initial conditions matter? Evidence from the ECHP. – In: *Measurement of poverty, deprivation and economic mobility*. Emerald Grp Publ. Ltd, pp. 23–70.
- Arnason, A. N. 1972. Parameter estimates from mark–recapture experiments on two populations subject to migration and death. – *Res. Popul. Ecol.* 13: 97–113.
- Arnason, A. N. 1973. The estimation of population size, migration rates and survival in a stratified population. – *Res. Popul. Ecol.* 15: 1–8.
- Aubry, L. M. et al. 2011. Drivers of age-specific survival in a long-lived seabird: contributions of observed and hidden sources of heterogeneity. – *J. Anim. Ecol.* 80: 375–383.
- Authier, M. et al. 2017. Wolf in sheep's clothing: model misspecification undermines tests of the neutral theory for life histories. – *Ecol. Evol.* 7: 3348–3361.
- Barbraud, C. and Weimerskirch, H. 2004. Modelling the effects of environmental and individual variability when measuring the costs of first reproduction. – *Anim. Biodivers. Conserv.* 27: 109–111.
- Barbraud, C. et al. 2005. Environmental conditions and breeding experience affect costs of reproduction in blue petrels. – *Ecology* 86: 682–692.
- Barbraud, C. et al. 2013. Fisheries bycatch as an inadvertent human-induced evolutionary mechanism. – *Plos One* 8: e60353.
- Baudisch, A. and Vaupel, J. W. 2012. Evolution. Getting to the root of aging. – *Science* 338: 618–619.
- Beauplet, G. et al. 2006. Age-specific survival and reproductive performances in fur seals: evidence of senescence and individual quality. – *Oikos* 112: 430–441.
- Berger, V. et al. 2015. Early and adult social environments have independent effects on individual fitness in a social vertebrate. – *Proc. R. Soc. B* 282: 20151167.
- Blomberg, E. J. et al. 2013. Seasonal reproductive costs contribute to reduced survival of female greater sage-grouse. – *J. Avian Biol.* 44: 149–158.
- Blums, P. et al. 2005. Individual quality, survival variation and patterns of phenotypic selection on body condition and timing of nesting in birds. – *Oecologia* 143: 365–376.

- Bolker, B. M. et al. 2009. Generalized linear mixed models: a practical guide for ecology and evolution. – *Trends Ecol. Evol.* 24: 127–135.
- Bolnick, D. I. et al. 2011. Why intraspecific trait variation matters in community ecology. – *Trends Ecol. Evol.* 26: 183–192.
- Bonenfant, C. et al. 2009. Age-dependent relationship between horn growth and survival in wild sheep. – *J. Anim. Ecol.* 78: 161–171.
- Bonner, S. J. and Schwarz, C. J. 2006. An extension of the Cormack–Jolly–Seber model for continuous covariates with application to *Microtus pennsylvanicus*. – *Biometrics* 62: 142–149.
- Bonner, S. J. et al. 2010. Continuous covariates in mark–recapture–recovery analysis: a comparison of methods. – *Biometrics* 66: 1256–1265.
- Bonnet, T. and Postma, E. 2016. Successful by chance? The power of mixed models and neutral simulations for the detection of individual fixed heterogeneity in fitness components. – *Am. Nat.* 187: 60–74.
- Borchers, D. 2012. A non-technical overview of spatially explicit capture–recapture models. – *J. Ornithol.* 152: 435–444.
- Bouwhuis, S. et al. 2012. The forms and fitness cost of senescence: age-specific recapture, survival, reproduction and reproductive value in a wild bird population. – *Am. Nat.* 179: E15–E27.
- Briggs, C. W. et al. 2011. Correlates of survival in Swainson's hawks breeding in northern California. – *J. Wildl. Manage.* 75: 1307–1314.
- Buoro, M. et al. 2010. Investigating evolutionary tradeoffs in wild populations of atlantic salmon (*Salmo salar*): incorporating detection probabilities and individual heterogeneity. – *Evolution* 64: 2629–2642.
- Buoro, M. et al. 2011. Assessing adaptive phenotypic plasticity by means of conditional strategies from empirical data: the latent environmental threshold model. – *Evolution* 66: 996–1009.
- Burnham, K. P. and Overton, W. S. 1979. Robust estimation of population size when capture probabilities vary among animals. – *Ecology* 60: 927–936.
- Burnham, K. P. and Rexstad, E. A. 1993. Modeling heterogeneity in survival rates of banded waterfowl. – *Biometrics* 49: 1194–1208.
- Burnham, K. P. and Anderson, D. R. 2002. Model selection and multimodel inference: a practical information-theoretic approach. – Springer.
- Cam, E. and Monnat, J. Y. 2000a. Stratification based on reproductive state reveals contrasting patterns of age-related variation in demographic parameters in the kittiwake. – *Oikos* 90: 560–574.
- Cam, E. and Monnat, J. Y. 2000b. Apparent inferiority of first-time breeders in the kittiwake: the role of heterogeneity among age classes. – *J. Anim. Ecol.* 69: 380–394.
- Cam, E. et al. 1998. Are adult nonbreeders prudent parents? The kittiwake model. – *Ecology* 79: 2917–2930.
- Cam, E. et al. 2002a. Individual covariation in life-history traits: seeing the trees despite the forest. – *Am. Nat.* 159: 96–105.
- Cam, E. et al. 2002b. Influence of behavioural tactics on recruitment and reproductive trajectory in the kittiwake. – *J. Appl. Stat.* 29: 163–185.
- Cam, E. et al. 2003. Long-term fitness consequences of early conditions in the kittiwake. – *J. Anim. Ecol.* 72: 411–424.
- Cam et al. 2004. Dispersal and individual quality in a long lived species. – *Oikos* 106: 386–398.
- Cam, E. et al. 2013. Looking for a needle in a haystack: inference about individual fitness components in a heterogeneous population. – *Oikos* 122: 739–753.
- Cam, E. et al. 2016. The conundrum of heterogeneities in life history studies. – *Trends Ecol. Evol.* 31: 872–886.
- Carothers, A. D. 1973. The effects of unequal catchability on Jolly–Seber estimates. – *Biometrics* 29: 79–100.
- Caswell, H. 2009. Stage, age and individual stochasticity in demography. – *Oikos* 118: 1763–1782.
- Catchpole, E. A. et al. 2010. A new method for analysing discrete life history data with missing covariate values. – *J. R. Stat. Soc. B Stat. Methodol.* 70: 445–460.
- Caughley, G. 1966. Mortality patterns in mammals. – *Ecology* 47: 906–918.
- Chamberlain, G. 1979. Heterogeneity, omitted variable bias, and duration dependence. Discussion Paper No. 691. – Harvard Inst. of Economic Research, Harvard Univ.
- Chambert, T. et al. 2013. Individual heterogeneity in reproductive rates and cost of reproduction in a long-lived vertebrate. – *Ecol. Evol.* 3: 2047–2060.
- Chambert, T. et al. 2014. Use of posterior predictive checks as an inferential tool for investigating individual heterogeneity in animal population vital rates. – *Ecol. Evol.* 4: 1389–1397.
- Chambert, T. et al. 2015. Female Weddell seals show flexible strategies of colony attendance related to varying environmental conditions. – *Ecology* 96: 479–488.
- Chao, A. 1987. Estimating the population size for capture–recapture data with unequal catchability. – *Biometrics* 43: 783–791.
- Choquet, R. et al. 2009. Program E – SURGE : a software application for fitting multievent models. – In: Thomson, D. L. et al. (eds), *Environmental and ecological statistics*. Springer, pp. 845–865.
- Choquet, R. et al. 2013. Estimating demographic parameters from capture–recapture data with dependence among individuals within clusters. – *Methods Ecol. Evol.* 4: 474–482.
- Clutton-Brock, T. H. 1988. *Reproductive success. Studies of individual variation in contrasting breeding systems.* – Univ. of Chicago Press.
- Clutton-Brock, T. and Sheldon, B. C. 2010. Individuals and populations: the role of long-term, individual-based studies of animals in ecology and evolutionary biology. – *Trends Ecol. Evol.* 25: 562–573.
- Cody, M. L. 1966. A general theory of clutch size. – *Evolution*. 20: 174–184.
- Cohen, J. 1986. An uncertainty principle in demography and the unisex issue. – *Am. Stat.* 40: 32–39.
- Conner, M. M. and White, G. C. 1999. Effects of individual heterogeneity in estimating the persistence of small populations. – *Nat. Resour. Model.* 12: 109–127.
- Conroy, M. J. 2009. Application of capture–recapture to addressing questions in evolutionary ecology. – In Thomson, D. L. et al. (eds), *Modeling demographic processes in marked populations, environmental and ecological statistics*. Springer, pp. 131–152.
- Cooch, E. G. et al. 2002. Occam's shadow: levels of analysis in evolutionary ecology – where to next? – *J. Appl. Stat.* 29: 19–48.
- Cormack, R. M. 1964. Estimates of survival from the sighting of marked animals. – *Biometrika* 51: 429–438.
- Coull, B. and Agresti, A. 1999. The use of mixed logit models to reflect heterogeneity in capture–recapture studies. – *Biometrics* 55: 294–301.

- Coulson, T. et al. 2011. Modeling effects of environmental change on wolf population dynamics, trait evolution, and life history. – *Science* 334: 1275–1278.
- Crespin, L. et al. 2008. Is heterogeneity of catchability in capture–recapture studies a mere sampling artifact or a biologically relevant feature of the population? – *Popul. Ecol.* 50: 247–256.
- Cubaynes, S. et al. 2010. Importance of accounting for detection heterogeneity when estimating abundance: the case of French wolves. – *Conserv. Biol.* 24: 621–626.
- Cubaynes, S. et al. 2012a. Testing hypotheses in evolutionary ecology with imperfect detection: Structural equation modeling of mark–recapture data. – *Ecology* 93: 248–255.
- Cubaynes, S. et al. 2012b. Assessing individual heterogeneity using model selection criteria: how many mixture components in capture–recapture models? – *Methods Ecol. Evol.* 3: 564–573.
- Descamps, S. et al. 2009. Costs of reproduction in a long-lived bird: large clutch size is associated with low survival in the presence of a highly virulent disease. – *Biol. Lett.* 5: 278–281.
- Desprez, M. et al. 2013. Known unknowns in an imperfect world: incorporating uncertainty in recruitment estimates using multi-event capture–recapture models. – *Ecol. Evol.* 3: 4658–4668.
- Dingemans, N. J. and Dochtermann, N. A. 2013. Quantifying individual variation in behaviour: mixed-effect modelling approaches. – *J. Anim. Ecol.* 82: 39–54.
- Dobzhansky, T. 1973. Nothing in biology makes sense except in the light of evolution. – *Am. Biol. Teach.* 35: 125–129.
- Douhard, M. et al. 2014. Fitness consequences of environmental conditions at different life stages in a long-lived vertebrate. – *Proc. R. Soc. B* 281: 20140276.
- Drummond, H. et al. 2011. Natural ‘poor start’ does not increase mortality over the lifetime. – *Proc. R. Soc. B* 278: 3421–3427.
- Duffie, D. et al. 2009. Frailty correlated default. – *J. Finance* 64: 2089–2123.
- Eberhardt, L. L. 1969. Population estimates from recapture frequencies. – *J. Wildl. Manage.* 33: 28–39.
- Efford, M. 2004. Density estimation in live-trapping studies. – *Oikos* 106: 598–610.
- Emlen, J. M. 1970. Age specificity and ecological theory. – *Ecology* 51: 588–601.
- Enki, D. G. et al. 2014. A time-varying shared frailty model with application to infectious diseases. – *Ann. Appl. Stat.* 8: 430–447.
- Estes, J. A. et al. 2003. Individual variation in prey selection by sea otters: patterns, causes and implications. – *J. Anim. Ecol.* 72: 144–155.
- Falconer, D. S. 1967. The inheritance of liability to diseases with variable age of onset, with particular reference to diabetes mellitus. – *Ann. Hum. Genet.* 31: 1–20.
- Farcomeni, A. and Tardella, L. 2010. Reference Bayesian methods for recapture models with heterogeneity. – *Test* 19: 187–208.
- Fay, R. et al. 2016a. Variation in the age of first reproduction: different strategies or individual quality? – *Ecology* 97: 1842–1851.
- Fay, R. et al. 2016b. Paternal but not maternal age influences early-life performance of offspring in a long-lived seabird. – *Proc. R. Soc. B* 283: 20152318.
- Festa-Bianchet, M. et al. 1998. Mass- and density-dependent reproductive success and reproductive costs in a capital breeder. – *Am. Nat.* 152: 367–379.
- Fletcher, D. et al. 2012. Bias in estimation of adult survival and asymptotic population growth rate caused by undetected capture heterogeneity. – *Methods Ecol. Evol.* 3: 206–216.
- Ford, J. H. et al. 2015. Modelling latent individual heterogeneity in mark–recapture data with Dirichlet process priors. – arXiv:1511.07103v1. <<https://arxiv.org/abs/1511.07103>>.
- Fox, G. A. et al. 2006. Consequences of heterogeneity in survival probability in a population of Florida scrub-jays. – *J. Anim. Ecol.* 75: 921–927.
- Garnier, A. et al. 2016. What shapes fitness costs of reproduction in long-lived iteroparous species? A case study on the Alpine ibex. – *Ecology* 97: 205–214.
- Gelman, A. et al. 2014. Understanding predictive information criteria for Bayesian models. – *Stat. Comput.* 24: 997–1016.
- Gershman, S. J. and Blei, D. M. 2012. A tutorial on Bayesian nonparametric models. – *J. Math. Psychol.* 56: 1–12.
- Ghosh, S. K. and Norris, J. L. 2005. Bayesian capture–recapture analysis and model selection allowing for heterogeneity and behavioral effects. – *J. Agric. Biol. Environ. Stat.* 10: 35–49.
- Gimenez, O. and Choquet, R. 2010. Individual heterogeneity in studies on marked animals using numerical integration: capture–recapture mixed models. – *Ecology* 91: 951–957.
- Gimenez, O. et al. 2007. State–space modelling of data on marked individuals. – *Ecol. Model.* 206: 431–438.
- Gimenez, O. et al. 2008. The risk of flawed inference in evolutionary studies when detectability is less than one. – *Am. Nat.* 172: 441–448.
- Gimenez, O. et al. 2009. Estimating and visualizing fitness surfaces using mark–recapture data. – *Evolution* 63: 3097–3105.
- Gimenez, O. et al. 2012. Estimating demographic parameters using hidden process dynamic models. – *Theor. Popul. Biol.* 82: 307–316.
- Gimenez, O. et al. 2017. Data from: Individual heterogeneity and capture–recapture models: what, why and how? – Github <https://github.com/oliviergimenez/indhet_in_CRmodels>.
- Green, R. F. 1977. Do more birds produce fewer young? A comment on Mayfield’s measure of nest success. – *Wilson Bull.* 89: 173–175.
- Guéry, L. et al. 2017. Hidden survival heterogeneity of three common eider populations in response to climate fluctuations. – *J. Anim. Ecol.* 86: 683–693.
- Gullett, P. et al. 2014. Climate change and annual survival in a temperate passerine: partitioning seasonal effects and predicting future patterns. – *Oikos* 123: 389–400.
- Hadley, G. L. et al. 2007. Evaluation of reproductive costs for Weddell seals in Erebus Bay, Antarctica. – *J. Anim. Ecol.* 76: 448–458.
- Hamel, S. et al. 2009. Individual variation in reproductive costs of reproduction: high-quality females always do better. – *J. Anim. Ecol.* 78: 143–151.
- Hamel, S. et al. 2014. A standardized approach to estimate life history tradeoffs in evolutionary ecology. – *Oikos* 123: 151–160.
- Hamel, S. et al. 2016. Cohort variation in individual body mass dissipates with age in large herbivores. – *Ecol. Monogr.* 86: 517–543.
- Hartson, R. B. et al. 2015. Competitive release modifies the impacts of hydrologic alteration for a partially migratory stream predator. – *Ecol. Freshwater Fish.* 24: 276–292.
- Heckman, J. J. 1981. The incidental parameters problem and the problem of initial conditions in estimating: a discrete time-discrete data stochastic process and some Monte Carlo evidence.

- Graduate School of Business and Dept of Economics, Univ. of Chicago.
- Heckman, J. J. and Willis, R. J. 1977. A beta-logistic model for the analysis of sequential labor force participation by married women. – *J. Political Econ.* 85: 27–58.
- Heckman, J. J. and Borjas, G. J. 1980. Does unemployment cause future unemployment? Definitions, questions and answers from a continuous time model of heterogeneity and state dependence. – *Economica* 47: 247–283.
- Hernandez-Matias, A. et al. 2011. Effects of age, territoriality and breeding on survival of Bonelli's eagle *Aquila fasciata*. – *Ibis* 153: 846–857.
- Hestbeck, J. B. et al. 1991. Estimates of movement and site fidelity using mark–resight data of wintering Canada geese. – *Ecology* 72: 523–533.
- Hileman, E. T. et al. 2015. Recouping lost information when mark–recapture data are pooled: a case study of milksnakes (*Lampropeltis triangulum*) in the upper midwestern United States. – *J. Herpetol.* 49: 428–436.
- Hooten, M. B. et al. 2015. A guide to Bayesian model selection for ecologists. – *Ecol. Monogr.* 85: 3–28.
- Horswill, C. et al. 2014. Survival in macaroni penguins and the relative importance of different drivers: individual traits, predation pressure and environmental variability. – *J. Anim. Ecol.* 83: 1057–1067.
- Hougaard, P. 1984. Life table methods for heterogeneous populations: distributions describing the heterogeneity. – *Biometrika* 71: 75–83.
- Hougaard, P. 1991. Modelling heterogeneity in survival data. – *J. Appl. Probab.* 28: 695–701.
- Hougaard, P. 1995. Frailty models for survival data. – *Lifetime Data Anal.* 1: 255–273.
- Hua, D. et al. 2015. Use of PIT tags to assess individual heterogeneity of laboratory-reared juveniles of the endangered Cumberlandian combshell (*Epioblasma brevidens*) in a mark–recapture study. – *Ecol. Evol.* 5: 1076–1087.
- Johnson, D. H. 1979. Estimating nest success: the Mayfield method and an alternative. – *Auk* 96: 651–661.
- Johnson, D. H. et al. 1986. The role of heterogeneity in animal population dynamics. – *Proc. 13th Int. Biometrics Conf. Sess. 5*, Seattle, June 1985.
- Johnson, D. S. et al. 2016. Multivariate state hidden Markov models for mark–recapture data. – *Stat. Sci.* 31: 233–244.
- Jolly, G. M. 1965. Explicit estimates from capture–recapture data with both death and immigration–stochastic model. – *Biometrika* 52: 225–247.
- Kannisto, V. 1991. Frailty and survival. – *Genus* 47: 101–118.
- Kaplan, D. 2008. An overview of Markov chain methods for study of stage-sequential developmental processes. – *Dev. Psychol.* 44: 457–467.
- Kendall, B. E. and Fox, G. A. 2002. Variation among individuals and reduced demographic stochasticity. – *Conserv. Biol.* 16: 109–116.
- Kendall, W. L. et al. 2003. Adjusting multistate capture–recapture models for misclassification bias: manatee breeding proportions. – *Ecology* 84: 1058–1066.
- Kendall, B. E. et al. 2011. Demographic heterogeneity, cohort selection and population growth. – *Ecology* 92: 1985–1993.
- Kenamer, R. A. et al. 2016. Effects of current reproductive success and individual heterogeneity on survival and future reproductive success of female ducks. – *Auk* 133: 439–450.
- Keyfitz, N. and Littman, G. 1979. Mortality in a heterogeneous population. – *Popul. Stud.* 33: 333–342.
- King, R. 2012. A review of Bayesian state–space modelling of capture–recapture–recovery data. – *Interface Focus* 2: 190–204.
- Knape, J. et al. 2011. Individual heterogeneity and senescence in silvereyes on Heron Island. – *Ecology* 92: 813–820.
- Koenig, W. D. et al. 1995. Patterns and consequences of egg destruction among joint-nesting acorn woodpeckers. – *Anim. Behav.* 50: 607–621.
- Koons, D. N. et al. 2014. Methods for studying cause-specific senescence in the wild. – *Methods Ecol. Evol.* 5: 924–933.
- Kovach, R. P. et al. 2010. Strong influence of microhabitat on survival for an intertidal snail, *Nucella lima*. – *Hydrobiologia* 652: 49–56.
- Kramer, G. H. 1983. The ecological fallacy revisited: aggregate-versus individual-level findings on economics and elections and sociotropic voting. – *Am. Polit. Sci. Rev.* 77: 92–111.
- Laake, J. L. 2013. RMark: an R interface for analysis of capture–recapture data with MARK. – *AFSC Process. Rep.* 2013-01 2013–1: 25.
- Laake, J. L. et al. 2013. marked: an R package for maximum likelihood and Markov chain Monte Carlo analysis of capture–recapture data. – *Methods Ecol. Evol.* 4: 885–890.
- Langrock, R. and King, R. 2013. Maximum likelihood estimation of mark–recapture–recovery models in the presence of continuous covariates. – *Ann. Appl. Stat.* 7: 1709–1732.
- Le Bohec, C. et al. 2007. Population dynamics in a long-lived seabird. I. Impact of breeding activity on survival and breeding probability in unbanded king penguins. – *J. Anim. Ecol.* 76: 1149–1160.
- Lebreton, J.-D. and Pradel, R. 2002. Multistate recapture models: modelling incomplete individual histories. – *J. Appl. Stat.* 29: 353–369.
- Lebreton, J.-D. et al. 1992. Modeling survival and testing biological hypotheses using marked animals: a unified approach with case studies. – *Ecol. Monogr.* 62: 67–118.
- Lebreton, J.-D. et al. 2009. Modeling individual animal histories with multistate capture–recapture models. – *Adv. Ecol. Res.* 41: 87–173.
- Lee, D. E. 2011. Effects of environmental variability and breeding experience on northern elephant seal demography. – *J. Mamm.* 92: 517–526.
- Lee, S. et al. 2016. Estimation in closed capture–recapture models when covariates are missing at random. – *Biometrics* 72: 1294–1304.
- Lemaître, J.-F. et al. 2015. Early–late life tradeoffs and the evolution of ageing in the wild. – *Proc. R. Soc. B* 282: 20150209.
- Lescroël, A. et al. 2009. Effects of individual quality, reproductive success and environmental variability on survival of a long-lived seabird. – *J. Anim. Ecol.* 78: 798–806.
- Lindberg, M. S. et al. 2013. Individual heterogeneity in black brant survival and recruitment with implications for harvest dynamics. – *Ecol. Evol.* 3: 4045–4056.
- Link, W. A. 2003. Nonidentifiability of population size from capture–recapture data with heterogeneous detection probabilities. – *Biometrics* 59: 1123–1130.
- Link, W. A. 2004. Individual heterogeneity and identifiability in capture–recapture models. – *Anim. Biodivers. Conserv.* 27: 87–91.
- Link, W. A. and Hesch, K. M. 2015. Individual heterogeneity in growth and age at sexual maturity: a gamma process analysis of capture–mark–recapture data. – *J. Agric. Biol. Environ. Stat.* 20: 343–352.

- Loison, A. et al. 1999. Age-specific survival in five populations of ungulates: evidence of senescence. – *Ecology* 80: 2539–2554.
- Lomnicki, A. 1978. Individual differences between animals and the natural regulation of their numbers. – *J. Anim. Ecol.* 47: 461–475.
- Lynch, M. and Walsh, B. 1998. Genetics and analysis of quantitative traits. – Sinauer.
- Manda, S. O. M. and Meyer, R. 2005. Bayesian inference for recurrent events data using time-dependent frailty. – *Stat. Med.* 24: 1263–1274.
- Maniscalco, J. M. et al. 2010. High natality rates of endangered Steller sea lions in Kenai fjords, Alaska and perceptions of population status in the Gulf of Alaska. – *PLoS One* 5: e10076.
- Manly, B. F. J. and Parr, M. J. 1968. A new method for estimating population size, survivorship and birth rate from capture–recapture data. – *Trans. Soc. Br. Entomol.* 18: 81–89.
- Manrique-Vallier, D. 2016. Bayesian population size estimation using Dirichlet process mixtures. – *Biometrics* 72: 1246–1254.
- Manton, K. G. et al. 1981. Methods for comparing the mortality experience of heterogeneous populations. – *Demography* 18: 389–410.
- Manton, K. G. et al. 1986. Alternative models for the heterogeneity of mortality risks among the aged. – *J. Am. Stat. Assoc.* 81: 635–644.
- Marescot, L. et al. 2011. Capture–recapture population growth rate as a robust tool against detection heterogeneity for population management. – *Ecol. Appl.* 21: 2898–2907.
- Marzolin, G. et al. 2011. Frailty in state–space models: application to actuarial senescence in the dipper. – *Ecology* 92: 562–567.
- Matechou, E. et al. 2016. Bayesian analysis of Jolly–Seber type models incorporating heterogeneity in arrival and departure. – *Environ. Ecol. Stat.* 23: 531–547.
- McLoughlin, P. D. et al. 2007. Lifetime reproductive success and composition of the home range in a large herbivore. – *Ecology* 88: 3192–3201.
- McNamara, J. M. and Houston, A. I. 1996. State-dependent life histories. – *Nature* 380: 215–221.
- Millon, A. et al. 2010. Pulsed resources affect the timing of first breeding and lifetime reproductive success of tawny owls. – *J. Anim. Ecol.* 79: 426–435.
- Morano, S. et al. 2013. Life-history strategies of North American elk: tradeoffs associated with reproduction and survival. – *J. Mamm.* 94: 162–172.
- Morgan, B. J. T. and Ridout, M. S. 2008. A new mixture model for capture heterogeneity. – *J. R. Stat. Soc. Ser. C Appl. Stat.* 57: 433–446.
- Moyes, K. et al. 2011. Individual differences in reproductive costs examined using multi-state methods. – *J. Anim. Ecol.* 80: 456–465.
- Nevoux, M. et al. 2007. Environmental variation and experience-related differences in the demography of the long-lived black-browed albatross. – *J. Anim. Ecol.* 76: 159–167.
- Newton, I. 1989. Lifetime reproduction in birds. – Academic Press.
- Nichols, J. D. 2002. Discussion comments on: “Occam’s shadow: levels of analysis in evolutionary ecology – where to next?” by Cooch, Cam and Link. – *J. Appl. Stat.* 29: 49–52.
- Nichols, J. D. and Kendall, W. L. 1995. The use of multi-state capture–recapture models to address questions in evolutionary ecology. – *J. Appl. Stat.* 22: 835–846.
- Nichols, J. D. et al. 1992. Estimating transition probabilities for stage-based population projection matrices using capture–recapture data. – *Ecology* 73: 306–312.
- Nichols, J. D. et al. 1994. Estimating breeding proportions and testing hypotheses about costs of reproduction with capture–recapture data. – *Ecology* 75: 2052–2065.
- Norris, J. L. and Pollock, K. H. 1996. Nonparametric MLE under two closed capture recapture models with heterogeneity. – *Biometrics* 52: 639–649.
- North, P. M. and Morgan, B. J. T. 1979. Modeling heron survival using weather data. – *Biometrics* 35: 667–681.
- Nussey, D. H. et al. 2008. Measuring senescence in wild animal populations: towards a longitudinal approach. – *Funct. Ecol.* 22: 393–406.
- Nussey, D. H. et al. 2013. Senescence in natural populations of animals: widespread evidence and its implications for biogerontology. – *Ageing Res. Rev.* 12: 214–225.
- O’Hara, R. B. and Sillanpää, M. J. 2009. A review of bayesian variable selection methods: what, how and which. – *Bayesian Anal.* 4: 85–118.
- Ohlssen, D. I. et al. 2007. Flexible random-effects models using Bayesian semi-parametric models: applications to institutional comparisons. – *Stat. Med.* 26: 2088–2112.
- Oliver, L. J. et al. 2011. Individual heterogeneity in recapture probability and survival estimates in cheetah. – *Ecol. Model.* 222: 776–784.
- Orzack, S. H. et al. 2011. Static and dynamic expression of life history traits in the northern fulmar *Fulmarus glacialis*. – *Oikos* 120: 369–380.
- Otis, D. L. et al. 1978. Statistical inference from capture data on closed animal populations. – *Wildl. Monogr.* 62: 3–135.
- Papaix, J. et al. 2010. Combining capture–recapture data and pedigree information to assess heritability of demographic parameters in the wild. – *J. Evol. Biol.* 23: 2176–2184.
- Pennell, M. L. and Dunson, D. B. 2006. Bayesian semiparametric dynamic frailty models for multiple event time data. – *Biometrics* 62: 1044–1052.
- Péron, G. et al. 2010. Capture–recapture models with heterogeneity to study survival senescence in the wild. – *Oikos* 119: 524–532.
- Péron, G. et al. 2016. Evidence of reduced individual heterogeneity in adult survival of long-lived. – *Evolution*. 70: 2909–2914.
- Pirotta, E. et al. 2015. Estimating spatial, temporal and individual variability in dolphin cumulative exposure to boat traffic using spatially explicit capture–recapture methods. – *Anim. Conserv.* 18: 20–31.
- Pistorius, P. A. et al. 2008. Seasonal survival and the relative cost of first reproduction in adult female southern elephant seals. – *J. Mamm.* 89: 567–574.
- Plard, F. et al. 2012. Modeling reproductive trajectories of roe deer females: fixed or dynamic heterogeneity? – *Theor. Popul. Biol.* 82: 317–328.
- Plard, F. et al. 2015. Quantifying the influence of measured and unmeasured individual differences on demography. – *J. Anim. Ecol.* 84: 1434–1445.
- Pledger, S. 2000. Unified maximum likelihood estimates for closed capture–recapture models using mixtures. – *Biometrics* 56: 434–442.
- Pledger, S. 2005. The performance of mixture models in heterogeneous closed population capture–recapture. – *Biometrics* 61: 868–873.
- Pledger, S. and Schwarz, C. J. 2002. Modelling heterogeneity of survival in band-recovery data using mixtures. – *J. Appl. Stat.* 29: 315–327.
- Pledger, S. and Phillpot, P. 2008. Using mixtures to model heterogeneity in ecological capture–recapture studies. – *Biometrical J.* 50: 1022–1034.

- Pledger, S. et al. 2003. Open capture–recapture models with heterogeneity. I. Cormack–Jolly–Seber model. – *Biometrics* 59: 786–794.
- Pledger, S. et al. 2010. Open capture–recapture models with heterogeneity. II. Jolly–Seber model – *Biometrics* 66: 883–890.
- Plum, A. and Ayllón, S. 2015. Heterogeneity in unemployment state dependence. – *Econ. Lett.* 136: 85–87.
- Plummer, M. 2003. JAGS: A program for analysis of Bayesian graphical models using Gibbs sampling. – *Proc. 3rd Int. Work. Distrib. Stat. Comput.* March 2002: 0.
- Pollock, K. H. 1981a. Capture–recapture models: a review of current methods, assumptions and experimental design. – *Stud. Avian Biol.* 6: 426–435.
- Pollock, K. H. 1981b. Capture–recapture models allowing for age-dependent survival and capture rates. – *Biometrics* 37: 521–529.
- Pollock, K. H. 2002. The use of auxiliary variables in capture–recapture modelling: an overview. – *J. Appl. Stat.* 29: 85–102.
- Pollock, K. H. et al. 1990. Statistical inference for capture–recapture experiments. – *Wildl. Monogr.* 107: 3–97.
- Pradel, R. 2005. Multievent: an extension of multistate capture–recapture models to uncertain states. – *Biometrics* 61: 442–447.
- Pradel, R. 2009. The stakes of capture–recapture models with state uncertainty. – In: *Modeling demographic processes in marked populations*. Thomson, D. L. et al. (eds), *Environmental and ecological statistics*. Springer, pp. 781–795.
- Pradel, R. et al. 2010. Estimating population growth rate from capture–recapture data in presence of capture heterogeneity. – *J. Agric. Biol. Environ. Stat.* 15: 248–258.
- Pradel, R. et al. 2012. Breeding experience might be a major determinant of breeding probability in long-lived species: the case of the greater flamingo. – *PLoS One* 7: e51016.
- Prowse, V. 2012. Modeling employment dynamics with state dependence and unobserved heterogeneity. – *J. Bus. Econ. Stat.* 30: 411–431.
- Putter, H. and Van Houwelingen, H. C. 2014. Dynamic frailty models based on compound birth–death processes. – *Biostatistics* 16: 550–564.
- Raman, S. et al. 2010. Infinite mixture-of-experts model for sparse survival regression with application to breast cancer. – *BMC Bioinformatics* 11 Suppl 8: S8.
- Rasmussen, C. E. 2000. The infinite Gaussian mixture model. – *Adv. Neural Inf. Process. Syst.* 12: 554–560.
- Reichert, B. E. et al. 2012. Extreme weather and experience influence reproduction in an endangered bird. – *Ecology* 93: 2580–2589.
- Reid, J. M. et al. 2003. Age-specific reproductive performance in red-billed choughs *Pyrrhocorax pyrrhocorax*: patterns and processes in a natural population. – *J. Anim. Ecol.* 72: 765–776.
- Reid, J. M. et al. 2010. Parent age, lifespan and offspring survival: structured variation in life history in a wild population. – *J. Anim. Ecol.* 79: 851–862.
- Rexstad, E. A. and Anderson, D. R. 1992. Heterogeneous survival rates of mallards (*Anas platyrhynchos*). – *Can. J. Zool.* 70: 1878–1885.
- Reznick, D. 1985. Costs of reproduction: an evaluation of the empirical evidence. – *Oikos* 44: 257–267.
- Robert, A. et al. 2012. The interaction between reproductive cost and individual quality is mediated by oceanic conditions in a long-lived bird. – *Ecology* 93: 1944–1952.
- Roff, D. A. 1992. *The evolution of life histories: theory and analysis*. – Chapman and Hall.
- Roulin, A. et al. 2003. Female colour polymorphism covaries with reproductive strategies in the tawny owl *Strix aluco*. – *J. Avian Biol.* 34: 393–401.
- Royle, J. A. 2008. Modeling individual effects in the Cormack–Jolly–Seber model: a state–space formulation. – *Biometrics* 64: 364–370.
- Sanz-Aguilar, A. et al. 2008. The cost of reproduction and experience-dependent vital rates in a small petrel. – *Ecology* 89: 3195–3203.
- Sanz-Aguilar, A. et al. 2011. Studying the reproductive skipping behavior in long-lived birds by adding nest inspection to individual-based data. – *Ecol. Appl.* 21: 555–564.
- Sauer, J. R. and Slade, N. A. 1987. Uinta ground squirrel demography: is body mass a better categorical variable than age? – *Ecology* 68: 642–650.
- Schwarz, C. J. 2001. The Jolly–Seber model: more than just abundance. – *J. Agric. Biol. Environ. Stat.* 6: 195–205.
- Schwarz, C. J. et al. 1993. Estimating migration rates using tag-recovery data. – *Biometrics* 49: 177–193.
- Seber, G. A. F. 1965. A note on the multiple-recapture census. – *Biometrika* 52: 249–259.
- Sedinger, J. S. et al. 2008. Fidelity and breeding probability related to population density and individual quality in black brent geese *Branta bernicla nigricans*. – *J. Anim. Ecol.* 77: 702–712.
- Senner, N. et al. 2015. An ontogenetic perspective on individual differences. – *Proc. R. Soc. B* 282: 20151050.
- Short, R. V. and Balaban, E. 1994. *The differences between the sexes*. – Cambridge Univ. Press.
- Skrondal, A. and Rabe-hesketh, S. 2014. Handling initial conditions and endogenous covariates in dynamic/transition models for binary data with unobserved heterogeneity. – *J. R. Stat. Soc.* 63: 211–237.
- Souchay, G. et al. 2014. To breed or not: a novel approach to estimate breeding propensity and potential tradeoffs in an Arctic-nesting species. – *Ecology* 95: 2745–2756.
- Spiegelhalter, D. J. et al. 2014. The deviance information criterion: 12 years on. – *J. R. Stat. Soc. Ser. B Stat. Methodol.* 76: 485–493.
- Stearns, S. C. 1976. Life-history tactics: a review of the ideas. – *Q. Rev. Biol.* 51: 3–47.
- Steiner, U. K. and Tuljapurkar, S. 2012. Neutral theory for life histories and individual variability in fitness components. – *Proc. Natl Acad. Sci. USA* 109: 4684–4689.
- Steiner, U. K. et al. 2010. Dynamic heterogeneity and life history variability in the kittiwake. – *J. Anim. Ecol.* 79: 436–444.
- Stoelting, R. E. et al. 2015. Life-history tradeoffs and reproductive cycles in spotted owls. – *Auk* 132: 46–64.
- Stover, J. P. et al. 2012. Demographic heterogeneity impacts density-dependent population dynamics. – *Theor. Ecol.* 5: 297–309.
- Tenan, S. et al. 2014. Bayesian model selection: the steepest mountain to climb. – *Ecol. Model.* 283: 62–69.
- Tuljapurkar, S. et al. 2009. Dynamic heterogeneity in life histories. – *Ecol. Lett.* 12: 93–106.
- van de Pol, M. and Verhulst, S. 2006. Age-dependent traits: a new statistical model to separate within- and between-individual effects. – *Am. Nat.* 167: 766–773.

- van de Pol, M. and Wright, J. 2009. A simple method for distinguishing within-versus between-subject effects using mixed models. – *Anim. Behav.* 77: 753–758.
- van Noordwijk, A. J. and de Jong, G. 1986. Acquisition and allocation of resources: their influence on variation in life history tactics. – *Am. Nat.* 128: 137–142.
- Vaupel, J. W. and Yashin, A. I. 1985. Heterogeneity's ruses: some surprising effects of selection on population dynamics. – *Am. Stat.* 39: 176–185.
- Vaupel, J. W. and Missov, T. I. 2014. Unobserved population heterogeneity: a review of formal relationships. – *Demogr. Res.* 31: 659–686.
- Vaupel, J. W. et al. 1979. The impact of heterogeneity in individual frailty on the dynamics of mortality. – *Demography* 16: 439–454.
- Weladji, R. B. et al. 2008. Heterogeneity in individual quality overrides costs of reproduction in female reindeer. – *Oecologia* 156: 237–247.
- White, G. C. and Burnham, K. P. 1999. Program MARK: survival estimation from populations of marked animals. – *Bird Study* 46: 120–139.
- White, G. C. and Cooch, E. G. 2017. Population abundance estimation with heterogeneous encounter probabilities using numerical integration. – *J. Wildl. Manage.* 81: 322–336.
- Wienke, A. 2003. Frailty models. – MPIDR Working Paper WP 2003-032. Max Planck Inst. for Demographic Research. <www.demogr.mpg.de/papers/working/wp-2003-032.pdf>.
- Wienke, A. 2010. Frailty models in survival analysis. – CRC Press.
- Wilson, A. J. and Nussey, D. H. 2010. What is individual quality? An evolutionary perspective. – *Trends Ecol. Evol.* 25: 207–214.
- Wintrebert, C. M. A. et al. 2005. Joint modelling of breeding and survival in the kittiwake using frailty models. – *Ecol. Model.* 181: 203–213.
- Wooldridge, J. M. 2005. Simple solutions to the initial conditions problem in dynamic, nonlinear panel data models with unobserved heterogeneity. – *J. Appl. Econom.* 20: 39–54.
- Worthington, H. et al. 2015. Analysing mark–recapture–recovery data in the presence of missing covariate data via multiple imputation. – *J. Agric. Biol. Environ. Stat.* 20: 28–46.
- Yashin, A. I. et al. 2001. Hidden frailty: myths and reality. – <<http://bit.ly/2nclmx7>>.
- Yashin, A. I. et al. 2008. Model of hidden heterogeneity in longitudinal data. – *Theor. Popul. Biol.* 73: 1–10.
- Yoccoz, N. G. et al. 2002. Costs of reproduction in common eiders (*Somateria mollissima*): an assessment of relationships between reproductive effort and future survival and reproduction based on observational and experimental studies. – *J. Appl. Stat.* 29: 57–64.
- Zens, M. S. and Peart, D. R. 2003. Dealing with death data: individual hazards, mortality and bias. – *Trends Ecol. Evol.* 18: 366–373.
- Zheng, C. Z. et al. 2007. Age-dependent survival analyzed with Bayesian models of mark–recapture data. – *Ecology* 88: 1970–1976.
- Zucchini, W. et al. 2016. Hidden Markov models for time series: an introduction using R, 2nd edn. – Chapman and Hall/CRC Press.

Supplementary material (available online as Appendix oik-04532 at <www.oikosjournal.org/appendix/oik-04532>). Appendix 1.